

# GATA2 (Phospho-Ser401) Antibody

Catalog No: #11691

Package Size: #11691-1 50ul #11691-2 100ul

Orders: [order@signalwayantibody.com](mailto:order@signalwayantibody.com)Support: [tech@signalwayantibody.com](mailto:tech@signalwayantibody.com)

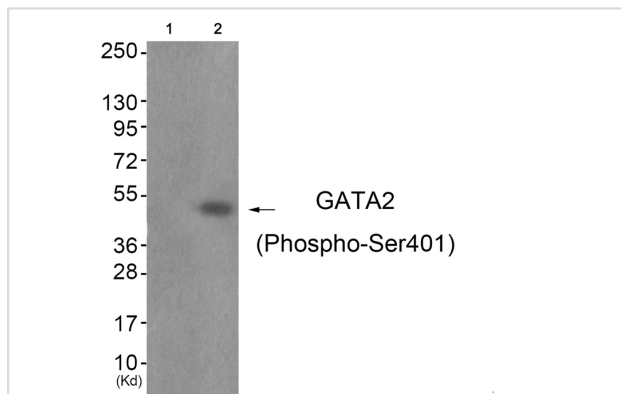
## Description

Product Name	GATA2 (Phospho-Ser401) Antibody
Host Species	Rabbit
Clonality	Polyclonal
Purification	Antibodies were produced by immunizing rabbits with synthetic phosphopeptide and KLH conjugates. Antibodies were purified by affinity-chromatography using epitope-specific phosphopeptide. Non-phospho specific antibodies were removed by chromatography using non-phosphopeptide.
Applications	WB
Species Reactivity	Hu Ms
Specificity	The antibody detects endogenous levels of GATA2 only when phosphorylated at serine 401.
Immunogen Type	Peptide-KLH
Immunogen Description	Peptide sequence around phosphorylation site of Serine 401(K-M-S(p)-N-K) derived from Human GATA2 .
Target Name	GATA2
Modification	Phospho
Other Names	GATA binding protein 2; Endothelial transcription factor GATA-2;
Accession No.	Swiss-Prot#: P23769; NCBI Gene#: 2624; NCBI Protein#: NP_001139133.1.
SDS-PAGE MW	50kd
Concentration	1.0mg/ml
Formulation	Rabbit IgG in phosphate buffered saline (without Mg <sup>2+</sup> and Ca <sup>2+</sup> ), pH 7.4, 150mM NaCl, 0.02% sodium azide and 50% glycerol.
Storage	Store at -20°C/1 year

## Application Details

Western blotting: 1:500~1:1000

## Images



Western blot analysis of extracts from JK cells (Lane 2), using GATA2 (Phospho-Ser401) Antibody #11691. The lane on the left is treated with antigen-specific peptide.

## Background

---

Transcriptional activator which regulates endothelin-1 gene expression in endothelial cells. Binds to the consensus sequence 5'-AGATAG-3'.

Lee M.-E., J. Biol. Chem. 266:16188-16192(1991).

Dorfman D.M., J. Biol. Chem. 267:1279-1285(1992).

The MGC Project Team; Genome Res. 14:2121-2127(2004).

---

Note: This product is for in vitro research use only and is not intended for use in humans or animals.