

Rac1(Ab-71) Antibody

Catalog No: #21201



Package Size: #21201-1 50ul #21201-2 100ul

Orders: order@signalwayantibody.comSupport: tech@signalwayantibody.com

Description

Product Name	Rac1(Ab-71) Antibody
Host Species	Rabbit
Clonality	Polyclonal
Purification	Affinity purification
Applications	WB,IF,IHC
Species Reactivity	Hu,Ms,Rt
Specificity	The antibody detects endogenous level of total Rac1 protein.
Immunogen Type	Peptide-KLH
Immunogen Description	Recombinant fusion protein containing a sequence corresponding of human Rac(NP_008839.2).
Target Name	Rac1
Other Names	Ras-like protein TC25; Ras-related C3 botulinum toxin substrate 1; p21-Rac1
Accession No.	Swiss-Prot: P63000NCBI Protein: NP_008839.2
Concentration	1.0mg/ml
Formulation	PBS with 0.05% proclin300,50% glycerol,pH7.3.
Storage	Store at -20°C for long term preservation (recommended). Store at 4°C for short term use.

Application Details

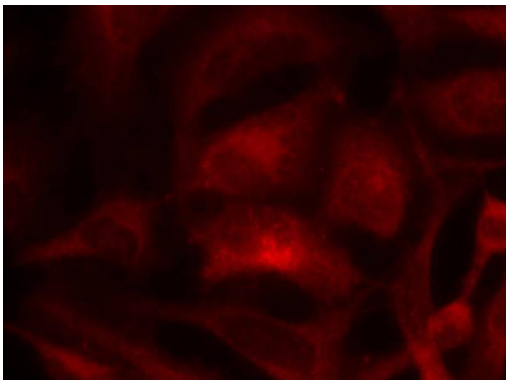
Predicted MW: 21kd

Western blotting: 1:500-1:1000

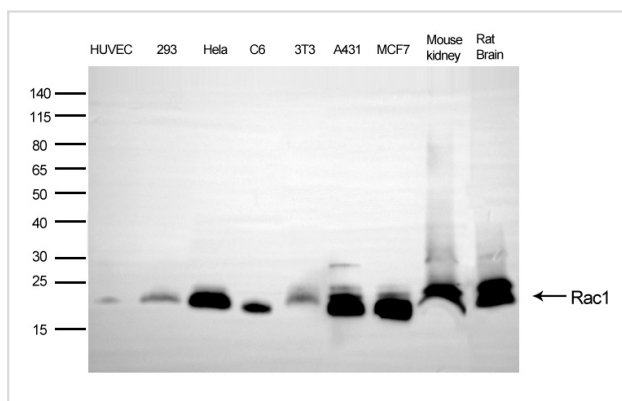
Immunofluorescence: 1:100-1:200

Immunohistochemistry 1:50-1:200

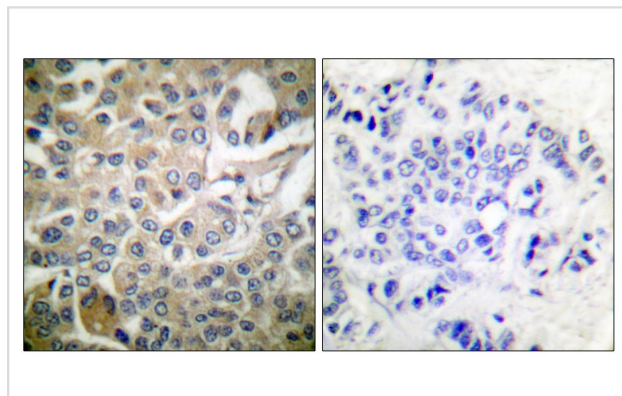
Images



Immunofluorescence staining of methanol-fixed HeLa cells using Rac1(Ab-71) Antibody #21201.



Western blot analysis of extracts from various cells using Rac1(Ab-71) Antibody #21201 .



Immunohistochemistry analysis of paraffin-embedded human breast carcinoma tissue. The picture on the right is blocked with the synthesized peptide.

Background

Rac1 encoded by this gene is a GTPase which belongs to the RAS superfamily of small GTP-binding proteins. Members of this superfamily appear to regulate a diverse array of cellular events, including the control of cell growth, cytoskeletal reorganization, and the activation of protein kinases. Two transcript variants encoding different isoforms have been found for this gene.

Aoki K, et al. (2005) *Mol Biol Cell*; 16(5): 2207

Published Papers

el at., Type II cyclic guanosine monophosphate-dependent protein kinase inhibits Rac1 activation in gastric cancer cells. *In Oncol Lett* on 2015 Jul by Ying Wang , Yongchang Chen et al..PMID: 26171059 , , (2015)

[PMID:26171059](https://pubmed.ncbi.nlm.nih.gov/26171059/)

Note: This product is for in vitro research use only and is not intended for use in humans or animals.