

## IGF1R (Phospho-Tyr1346) Antibody

Catalog No: #11716

Package Size: #11716-1 50ul #11716-2 100ul

Orders: order@signalwayantibody.com

Support: tech@signalwayantibody.com

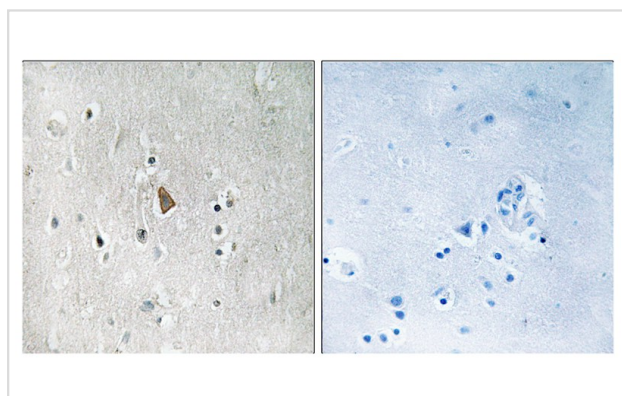
## Description

Product Name	IGF1R (Phospho-Tyr1346) Antibody
Host Species	Rabbit
Clonality	Polyclonal
Purification	Antibodies were produced by immunizing rabbits with synthetic phosphopeptide and KLH conjugates. Antibodies were purified by affinity-chromatography using epitope-specific phosphopeptide. Non-phospho specific antibodies were removed by chromatography using non-phosphopeptide.
Applications	IHC
Species Reactivity	Hu
Specificity	The antibody detects endogenous levels of IGF1R only when phosphorylated at tyrosine 1346.
Immunogen Type	Peptide-KLH
Immunogen Description	Peptide sequence around phosphorylation site of tyrosine 1346(Q-P-Y(p)-A-H) derived from Human IGF1R .
Target Name	IGF1R
Modification	Phospho
Other Names	CD221; kinase IGF1R; IGF1R;
Accession No.	Swiss-Prot#: P08069; NCBI Gene#: 3480; NCBI Protein#: NP_000866.1.
SDS-PAGE MW	154kd
Concentration	1.0mg/ml
Formulation	Rabbit IgG in phosphate buffered saline (without Mg <sup>2+</sup> and Ca <sup>2+</sup> ), pH 7.4, 150mM NaCl, 0.02% sodium azide and 50% glycerol.
Storage	Store at -20°C/1 year

## Application Details

Immunohistochemistry: 1:50~1:100

## Images



Immunohistochemical analysis of paraffin-embedded human brain tissue using IGF1R (Phospho-Tyr1346) antibody #11716 (left) or the same antibody preincubated with blocking peptide (right).

## Background

---

This receptor binds insulin-like growth factor with a high affinity. It has tyrosine kinase activity. The insulin-like growth factor I receptor plays a critical role in transformation events. Cleavage of the precursor generates alpha and beta subunits. It is highly overexpressed in most malignant tissues where it functions as an anti-apoptotic agent by enhancing cell survival.

Ullrich A., EMBO J. 5:2503-2512(1986).

Abbot A.M., J. Biol. Chem. 267:10759-10763(1992).

The MGC Project Team;Genome Res. 14:2121-2127(2004).

---

Note: This product is for in vitro research use only and is not intended for use in humans or animals.