

Retinoblastoma (Phospho-Ser608) Antibody

Catalog No: #11720



Package Size: #11720-1 50ul #11720-2 100ul

Orders: order@signalwayantibody.com

Support: tech@signalwayantibody.com

Description

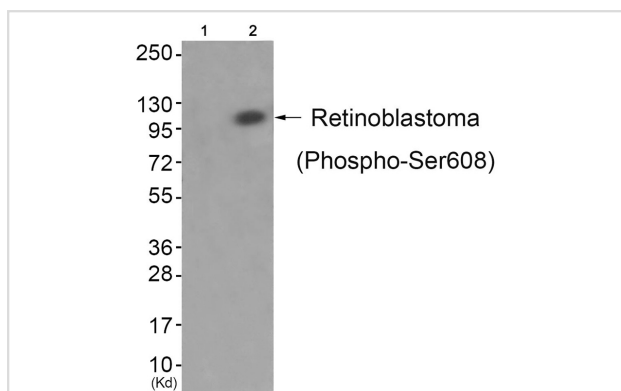
| | |
|-----------------------|--|
| Product Name | Retinoblastoma (Phospho-Ser608) Antibody |
| Host Species | Rabbit |
| Clonality | Polyclonal |
| Purification | Antibodies were produced by immunizing rabbits with synthetic phosphopeptide and KLH conjugates. Antibodies were purified by affinity-chromatography using epitope-specific phosphopeptide. Non-phospho specific antibodies were removed by chromatography using non-phosphopeptide. |
| Applications | WB IHC |
| Species Reactivity | Hu Ms |
| Specificity | The antibody detects endogenous levels of Retinoblastoma only when phosphorylated at serine 608. |
| Immunogen Type | Peptide-KLH |
| Immunogen Description | Peptide sequence around phosphorylation site of Serine 608(Y-L-S(p)-P-V) derived from Human Retinoblastoma. |
| Target Name | Retinoblastoma |
| Modification | Phospho |
| Other Names | P105-RB; PP105; PP110; RB1; |
| Accession No. | Swiss-Prot#: P06400; NCBI Gene#: 5925; NCBI Protein#: NP_000312.2. |
| SDS-PAGE MW | 110kd |
| Concentration | 1.0mg/ml |
| Formulation | Rabbit IgG in phosphate buffered saline (without Mg ²⁺ and Ca ²⁺), pH 7.4, 150mM NaCl, 0.02% sodium azide and 50% glycerol. |
| Storage | Store at -20°C/1 year |

Application Details

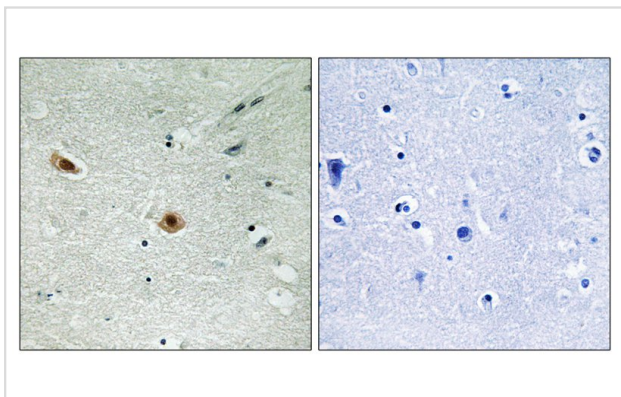
Western blotting: 1:500~1:1000

Immunohistochemistry: 1:50~1:100

Images



Western blot analysis of extracts from JK cells (Lane 2), using Retinoblastoma (Phospho-Ser608) Antibody #11720. The lane on the left is treated with antigen-specific peptide.



Immunohistochemical analysis of paraffin-embedded human brain tissue using Retinoblastoma (Phospho-Ser608) antibody #11720 (left) or the same antibody preincubated with blocking peptide (right).

Background

Retinoblastoma (RB) is an embryonic malignant neoplasm of retinal origin. It almost always presents in early childhood and is often bilateral.

Spontaneous regression ('cure') occurs in some cases.

Lee W.-H., *Nature* 329:642-645(1987).

Lee W.-H., *Science* 235:1394-1399(1987).

Friend S.H., *Proc. Natl. Acad. Sci. U.S.A.* 84:9059-9063(1987).

Note: This product is for in vitro research use only and is not intended for use in humans or animals.