

SHP-1 (Phospho-Tyr564) Antibody

Catalog No: #11721



Package Size: #11721-1 50ul #11721-2 100ul

Orders: order@signalwayantibody.com

Support: tech@signalwayantibody.com

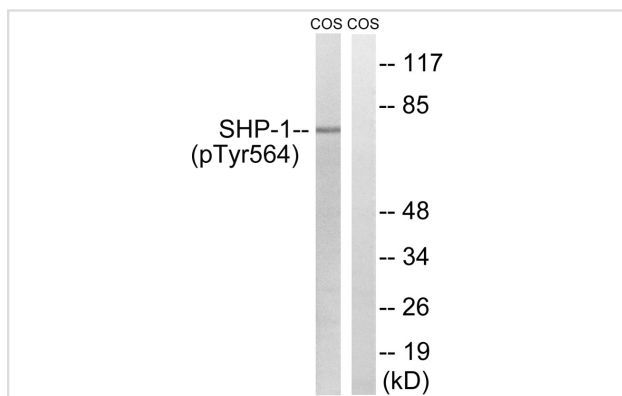
Description

Product Name	SHP-1 (Phospho-Tyr564) Antibody
Host Species	Rabbit
Clonality	Polyclonal
Purification	Antibodies were produced by immunizing rabbits with synthetic phosphopeptide and KLH conjugates. Antibodies were purified by affinity-chromatography using epitope-specific phosphopeptide. Non-phospho specific antibodies were removed by chromatography using non-phosphopeptide.
Applications	WB
Species Reactivity	Hu
Specificity	The antibody detects endogenous levels of SHP-1 only when phosphorylated at tyrosine 564.
Immunogen Type	Peptide-KLH
Immunogen Description	Peptide sequence around phosphorylation site of tyrosine 564(D-V-Y(p)-E-N) derived from Human SHP-1.
Target Name	SHP-1
Modification	Phospho
Other Names	HCP; HCPH; PTN6; PTP1C; SHP1
Accession No.	Swiss-Prot#: P29350; NCBI Gene#: 5777; NCBI Protein#: NP_002822.2.
SDS-PAGE MW	70kd
Concentration	1.0mg/ml
Formulation	Rabbit IgG in phosphate buffered saline (without Mg ²⁺ and Ca ²⁺), pH 7.4, 150mM NaCl, 0.02% sodium azide and 50% glycerol.
Storage	Store at -20°C/1 year

Application Details

Western blotting: 1:500~1:1000

Images



Western blot analysis of extracts from COS7 cells treated with EGF using SHP-1 (Phospho-Tyr564) Antibody #. The lane on the right is treated with the antigen-specific peptide.

Background

Acts downstream of various receptor and cytoplasmic protein tyrosine kinases to participate in the signal transduction from the cell surface to the nucleus.

Yi T., Mol. Cell. Biol. 12:836-846(1992).

Shen S.H., Nature 352:736-739(1991).

Plutzky J., Proc. Natl. Acad. Sci. U.S.A. 89:1123-1127(1992).

Note: This product is for in vitro research use only and is not intended for use in humans or animals.