

## MEK1/MEK2(Ab-217/221) Antibody

Catalog No: #21203



Package Size: #21203-1 50ul #21203-2 100ul

Orders: order@signalwayantibody.com

Support: tech@signalwayantibody.com

## Description

Product Name	MEK1/MEK2(Ab-217/221) Antibody
Host Species	Rabbit
Clonality	Polyclonal
Purification	Antibodies were produced by immunizing rabbits with synthetic peptide and KLH conjugates. Antibodies were purified by affinity-chromatography using epitope-specific peptide.
Applications	WB IHC IF
Species Reactivity	Hu Ms Rt
Specificity	The antibody detects endogenous level of total MEK1/MEK2 protein.
Immunogen Type	Peptide-KLH
Immunogen Description	Peptide sequence around aa.215~219/219~223 (I-D-S-M-A) derived from Human MEK1/MEK2.
Target Name	MEK1/MEK2
Other Names	ERK activator kinase 1/ERK activator kinase2; MAP kinase kinase 1/MAP kinase kinase 2; MAP2K1/MAP2K1; MAPK/ERK kinase 1/MAPK/ERK kinase 2; MAPKK 1/MAPKK 1
Accession No.	Swiss-Prot: Q02750NCBI Protein: NP_002746.1 NP_109587.1
Concentration	1.0mg/ml
Formulation	Supplied at 1.0mg/mL in phosphate buffered saline (without Mg <sup>2+</sup> and Ca <sup>2+</sup> ), pH 7.4, 150mM NaCl, 0.02% sodium azide and 50% glycerol.
Storage	Store at -20°C for long term preservation (recommended). Store at 4°C for short term use.

## Application Details

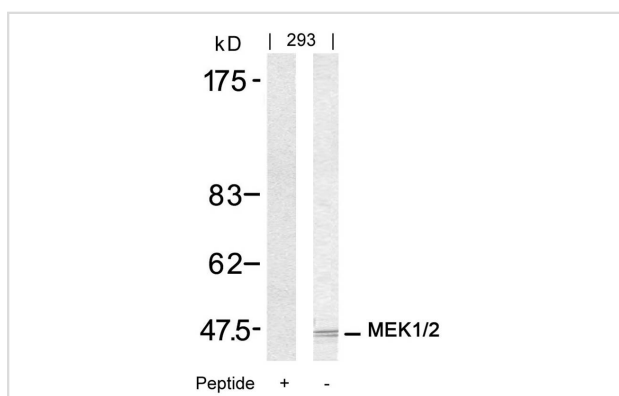
Predicted MW: 45kd

Western blotting: 1:500~1:1000

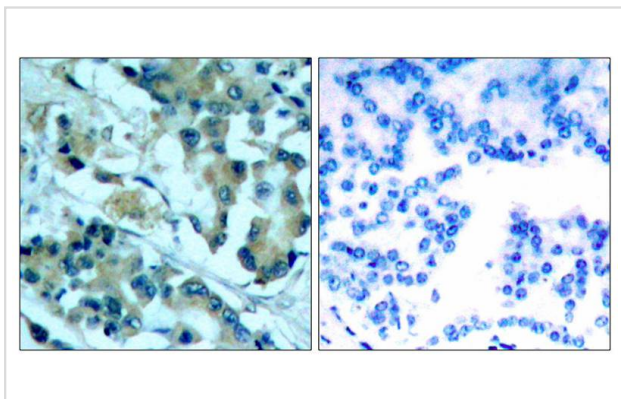
Immunohistochemistry: 1:50~1:100

Immunofluorescence: 1:100~1:200

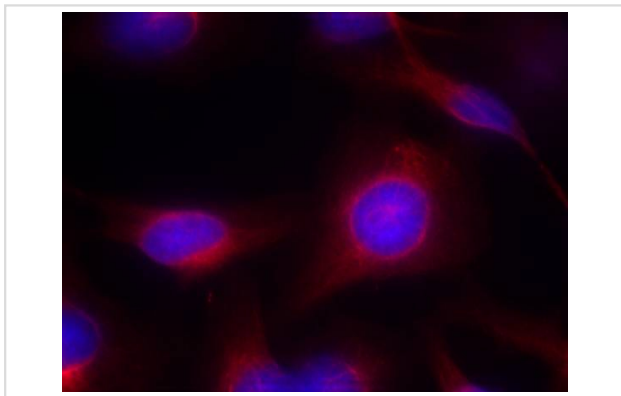
## Images



Western blot analysis of extracts from 293 cells using MEK1/MEK2(Ab-217/221) Antibody #21203 and the same antibody preincubated with blocking peptide.



Immunohistochemical analysis of paraffin-embedded human lung carcinoma tissue using MEK1/MEK2(Ab-217/221) Antibody #21203(left) or the same antibody preincubated with blocking peptide(right).



Immunofluorescence staining of methanol-fixed HeLa cells using MEK1/MEK2(Ab-217/221) Antibody #21203.

## Background

Catalyzes the concomitant phosphorylation of a threonine and a tyrosine residue in a Thr-Glu-Tyr sequence located in MAP kinases. Activates ERK1 and ERK2 MAP kinases.

Shen R, et al. (2002) *Mol Cell Biol*; 22(10): 3230-3236

Preisinger C, et al. (2005) *EMBO J*; 24(4): 753-765

Laine P, et al. (2000) *Biochem J*; 349(Pt 1): 19-25

Yaglom J, et al. (2003) *Mol Cell Biol*; 23(11): 3813-3824

Dahan S, et al. (2002) *Infect Immun*; 70(5): 2304-2310

## Published Papers

et al., UBIAD1 suppresses the proliferation of bladder carcinoma cells by regulating H-Ras intracellular trafficking via interaction with the C-terminal domain of H-Ras. *In Cell Death Dis.* On 2018 Dec 5 by Xu Z, Duan F et al..PMID: 30518913, , (2018)

[PMID:30518913](#)

et al., *Mycoplasma ovipneumoniae* induces sheep airway epithelial cell apoptosis through an ERK signalling-mediated mitochondria pathway. *In BMC Microbiol* on 2016 Sep 23 by Yanan Li, Zhongjia Jiang,et al..PMID:27663303, , (2016)

[PMID:27663303](#)

et al., Effect of Chaihushugan San on Expression of the Raf/mitogen-activated Protein Kinase/Extracellular Signal-Regulated Kinase Pathway in the Hippocampi of Perimenopausal Rats Induced by Immobilization Stress .*In J Tradit Chin Med* on 2015 Aug by Li Shengqiang, Liang Wenna et al..PMID:26427116, , (2015)

[PMID:26427116](#)

Note: This product is for in vitro research use only and is not intended for use in humans or animals.