

STK39 (Phospho-Ser309) Antibody

Catalog No: #11755

Package Size: #11755-1 50ul #11755-2 100ul

Orders: order@signalwayantibody.com

Support: tech@signalwayantibody.com

Description

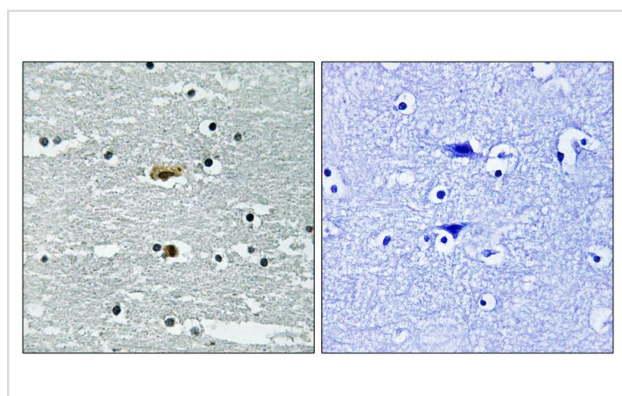
Product Name	STK39 (Phospho-Ser309) Antibody
Host Species	Rabbit
Clonality	Polyclonal
Purification	Antibodies were produced by immunizing rabbits with synthetic phosphopeptide and KLH conjugates. Antibodies were purified by affinity-chromatography using epitope-specific phosphopeptide. Non-phospho specific antibodies were removed by chromatography using non-phosphopeptide.
Applications	WB IHC
Species Reactivity	Hu
Specificity	The antibody detects endogenous levels of STK39 only when phosphorylated at serine 309.
Immunogen Type	Peptide-KLH
Immunogen Description	Peptide sequence around phosphorylation site of Serine 309(K-G-S(p)-F-R) derived from Human STK39.
Target Name	STK39
Modification	Phospho
Other Names	DCHT; STK39; SPAK;
Accession No.	Swiss-Prot#: Q9UEW8; NCBI Gene#: 27347; NCBI Protein#: NP_037365.2.
SDS-PAGE MW	60kd
Concentration	1.0mg/ml
Formulation	Rabbit IgG in phosphate buffered saline (without Mg ²⁺ and Ca ²⁺), pH 7.4, 150mM NaCl, 0.02% sodium azide and 50% glycerol.
Storage	Store at -20°C/1 year

Application Details

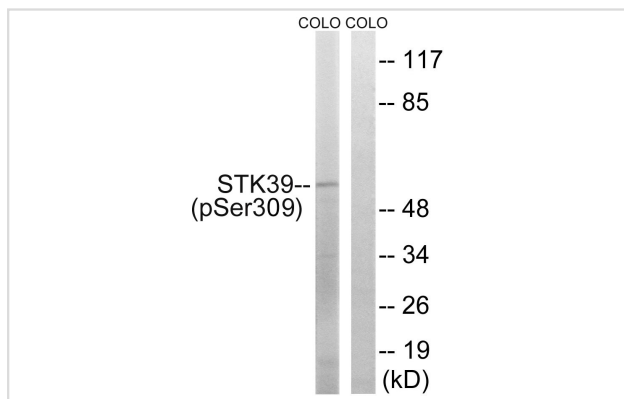
Western blotting: 1:500~1:1000

Immunohistochemistry: 1:50~1:100

Images



Immunohistochemical analysis of paraffin-embedded human brain tissue using STK39 (Phospho-Ser309) antibody #11755 (left) or the same antibody preincubated with blocking peptide (right).



Western blot analysis of extracts from COLO cells using STK39 (Phospho-Ser309) Antibody #11755. The lane on the right is treated with the antigen-specific peptide.

Background

May act as a mediator of stress-activated signals.

Johnston A.M., *Oncogene* 19:4290-4297(2000).

Melnick M.B., Submitted (OCT-1997) to the EMBL/GenBank/DDBJ databases.

Olsen J.V., *Cell* 127-635-648(2006).

Note: This product is for in vitro research use only and is not intended for use in humans or animals.