

VEGFR1 (Phospho-Tyr1048) Antibody

Catalog No: #11759

Package Size: #11759-1 50ul #11759-2 100ul

Orders: order@signalwayantibody.comSupport: tech@signalwayantibody.com

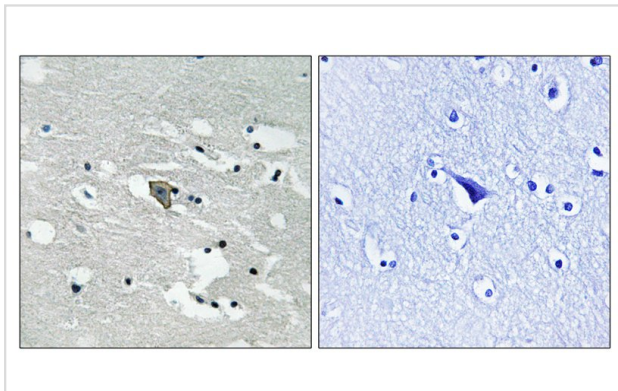
Description

Product Name	VEGFR1 (Phospho-Tyr1048) Antibody
Host Species	Rabbit
Clonality	Polyclonal
Purification	Antibodies were produced by immunizing rabbits with synthetic phosphopeptide and KLH conjugates. Antibodies were purified by affinity-chromatography using epitope-specific phosphopeptide. Non-phospho specific antibodies were removed by chromatography using non-phosphopeptide.
Applications	IHC
Species Reactivity	Hu
Specificity	The antibody detects endogenous levels of VEGFR1 only when phosphorylated at tyrosine 1048.
Immunogen Type	Peptide-KLH
Immunogen Description	Peptide sequence around phosphorylation site of tyrosine 1048 (D-I-Y(p)-K-N) derived from Human VEGFR1.
Target Name	VEGFR1
Modification	Phospho
Other Names	VGFR1; FRT; FLT1; FLT;
Accession No.	Swiss-Prot#: P17948; NCBI Gene#: 2321; NCBI Protein#: NP_002010.2.
SDS-PAGE MW	150kd
Concentration	1.0mg/ml
Formulation	Rabbit IgG in phosphate buffered saline (without Mg ²⁺ and Ca ²⁺), pH 7.4, 150mM NaCl, 0.02% sodium azide and 50% glycerol.
Storage	Store at -20°C/1 year

Application Details

Immunohistochemistry: 1:50~1:100

Images



Immunohistochemical analysis of paraffin-embedded human brain tissue using VEGFR1 (Phospho-Tyr1048) antibody #11759 (left) or the same antibody preincubated with blocking peptide (right).

Background

Receptor for VEGF, VEGFB and PGF. Has a tyrosine-protein kinase activity. The VEGF-kinase ligand/receptor signaling system plays a key role in vascular development and regulation of vascular permeability. Isoform SFlt1 may have an inhibitory role in angiogenesis.

Shibuya M., *Oncogene* 5:519-524(1990).

Kendall R.L., *Proc. Natl. Acad. Sci. U.S.A.* 90:10705-10709(1993).

The MGC Project Team; *Genome Res.* 14:2121-2127(2004).

Note: This product is for in vitro research use only and is not intended for use in humans or animals.