

## Claudin 6 (Phospho-Tyr219) Antibody

Catalog No: #11793



Package Size: #11793-1 50ul #11793-2 100ul

Orders: order@signalwayantibody.com

Support: tech@signalwayantibody.com

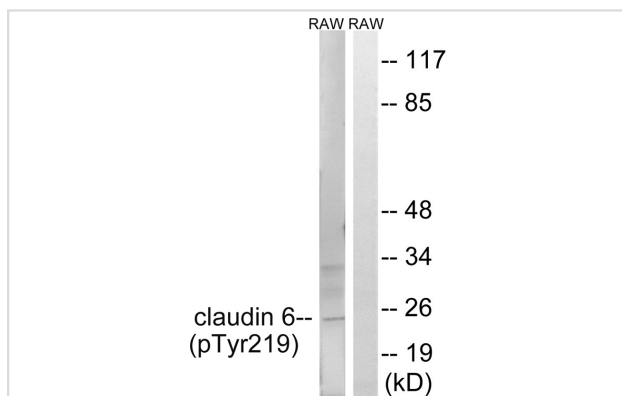
## Description

Product Name	Claudin 6 (Phospho-Tyr219) Antibody
Host Species	Rabbit
Clonality	Polyclonal
Purification	Antibodies were produced by immunizing rabbits with synthetic phosphopeptide and KLH conjugates. Antibodies were purified by affinity-chromatography using epitope-specific phosphopeptide. Non-phospho specific antibodies were removed by chromatography using non-phosphopeptide.
Applications	WB
Species Reactivity	Hu Ms
Specificity	The antibody detects endogenous levels of Claudin 6 only when phosphorylated at tyrosine 219.
Immunogen Type	Peptide-KLH
Immunogen Description	Peptide sequence around phosphorylation site of tyrosine 219 (T-K-N-Y(p)-V) derived from Human Claudin 6.
Target Name	Claudin 6
Modification	Phospho
Other Names	claudin 6; claudin-6; CLD6; Skullin 2;
Accession No.	Swiss-Prot#: P56747; NCBI Gene#: 9074; NCBI Protein#: NP_067018.2.
SDS-PAGE MW	23kd
Concentration	1.0mg/ml
Formulation	Rabbit IgG in phosphate buffered saline (without Mg <sup>2+</sup> and Ca <sup>2+</sup> ), pH 7.4, 150mM NaCl, 0.02% sodium azide and 50% glycerol.
Storage	Store at -20°C/1 year

## Application Details

Western blotting: 1:500~1:1000

## Images



Western blot analysis of extracts from RAW264.7 cells treated with UV using Claudin 6 (Phospho-Tyr219) Antibody #11793. The lane on the right is treated with the antigen-specific peptide.

## Background

---

Claudin 6 Plays a major role in tight junction-specific obliteration of the intercellular space. Directly interacts with TJP1/ZO-1, TJP2/ZO-2 and TJP3/ZO-3.

Keen T.J., Submitted (SEP-1999) to the EMBL/GenBank/DDBJ databases.

Troy T., Submitted (FEB-2001) to the EMBL/GenBank/DDBJ databases.

Clark H.F., Genome Res. 13:2265-2270(2003).

---

Note: This product is for in vitro research use only and is not intended for use in humans or animals.