

## CNOT2 (Phospho-Ser101) Antibody

Catalog No: #11810

Package Size: #11810-1 50ul #11810-2 100ul

Orders: order@signalwayantibody.com

Support: tech@signalwayantibody.com

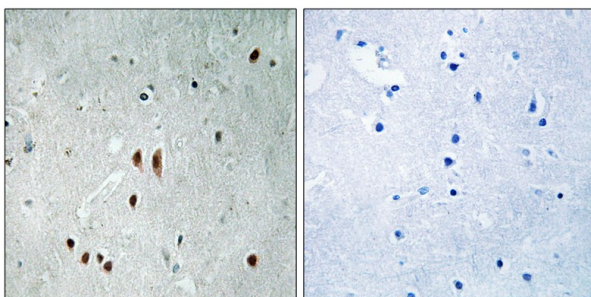
## Description

|                       |  |
|-----------------------|--|
| Product Name          | CNOT2 (Phospho-Ser101) Antibody  |
| Host Species          | Rabbit   |
| Clonality             | Polyclonal   |
| Purification          | Antibodies were produced by immunizing rabbits with synthetic phosphopeptide and KLH conjugates. Antibodies were purified by affinity-chromatography using epitope-specific phosphopeptide. Non-phospho specific antibodies were removed by chromatography using non-phosphopeptide. |
| Applications          | IHC  |
| Species Reactivity    | Hu Ms Rt   |
| Specificity           | The antibody detects endogenous levels of CNOT2 only when phosphorylated at serine 101.  |
| Immunogen Type        | Peptide-KLH  |
| Immunogen Description | Peptide sequence around phosphorylation site of Serine101(S-L-S(p)-Q-G) derived from Human CNOT2.  |
| Target Name           | CNOT2  |
| Modification          | Phospho  |
| Other Names           | NOT2H; CDC36; CNOT2; HSPC131;  |
| Accession No.         | Swiss-Prot#: Q9NZN8; NCBI Gene#: 4848; NCBI Protein#: NP_001186231.1.  |
| SDS-PAGE MW           | 59kd   |
| Concentration         | 1.0mg/ml   |
| Formulation           | Rabbit IgG in phosphate buffered saline (without Mg <sup>2+</sup> and Ca <sup>2+</sup> ), pH 7.4, 150mM NaCl, 0.02% sodium azide and 50% glycerol.   |
| Storage               | Store at -20°C/1 year  |

## Application Details

Immunohistochemistry: 1:50~1:100

## Images



Immunohistochemical analysis of paraffin-embedded human brain tissue using CNOT2 (Phospho-Ser101) antibody #11810 (left) or the same antibody preincubated with blocking peptide (right).

## Background

---

The CCR4-NOT complex functions as general transcription regulation complex. Subunit of the CCR4-NOT core complex that contains CHAF1A, CHAF1B, CNOT1, CNOT2, CNOT3, CNOT4, CNOT6 and CNOT8. 5 isoforms of the human protein are produced by alternative splicing.

Albert T.K., *Nucleic Acids Res.* 28:809-817(2000).

Zhang Q.-H., *Genome Res.* 10:1546-1560(2000).

Ota T., *Nat. Genet.* 36:40-45(2004).

---

Note: This product is for in vitro research use only and is not intended for use in humans or animals.