

EPHA4 (Phospho-Tyr596) Antibody

Catalog No: #11834



Package Size: #11834-1 50ul #11834-2 100ul

Orders: order@signalwayantibody.comSupport: tech@signalwayantibody.com

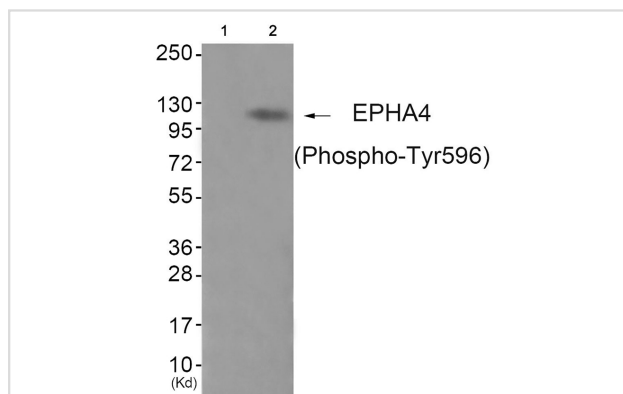
Description

Product Name	EPHA4 (Phospho-Tyr596) Antibody
Host Species	Rabbit
Clonality	Polyclonal
Purification	Antibodies were produced by immunizing rabbits with synthetic phosphopeptide and KLH conjugates. Antibodies were purified by affinity-chromatography using epitope-specific phosphopeptide. Non-phospho specific antibodies were removed by chromatography using non-phosphopeptide.
Applications	WB
Species Reactivity	Hu
Specificity	The antibody detects endogenous levels of EPHA4 only when phosphorylated at tyrosine 596
Immunogen Type	Peptide-KLH
Immunogen Description	Peptide sequence around phosphorylation site of tyrosine 596 (R-T-Y(p)-V-D) derived from Human EPHA4 .
Target Name	EPHA4
Modification	Phospho
Other Names	EK8; hEK8; EPH-like kinase 8;
Accession No.	Swiss-Prot#: P54764; NCBI Gene#: 2043; NCBI Protein#: NP_004429.1.
SDS-PAGE MW	110kd
Concentration	1.0mg/ml
Formulation	Rabbit IgG in phosphate buffered saline (without Mg ²⁺ and Ca ²⁺), pH 7.4, 150mM NaCl, 0.02% sodium azide and 50% glycerol.
Storage	Store at -20°C/1 year

Application Details

Western blotting: 1:500~1:1000

Images



Western blot analysis of extracts from JK cells (Lane 2), using EPHA4 (Phospho-Tyr596) Antibody #11834. The lane on the left is treated with antigen-specific peptide.

Background

Receptor tyrosine kinase which binds membrane-bound ephrin family ligands residing on adjacent cells, leading to contact-dependent bidirectional signaling into neighboring cells. The signaling pathway downstream of the receptor is referred to as forward signaling while the signaling pathway downstream of the ephrin ligand is referred to as reverse signaling. Highly promiscuous, it has the unique property among Eph receptors to bind and to be physiologically activated by both GPI-anchored ephrin-A and transmembrane ephrin-B ligands including EFNA1 and EFN3. Upon activation by ephrin ligands, modulates cell morphology and integrin-dependent cell adhesion through regulation of the Rac, Rap and Rho GTPases activity.

Rikova K., Cell 131:1190-1203(2007) [PubMed: 18083107].

Richter M., J. Neurosci. 27:14205-14215(2007) [PubMed: 18094260].

Fu W.Y., Nat. Neurosci. 10:67-76(2007) [PubMed: 17143272].

Note: This product is for in vitro research use only and is not intended for use in humans or animals.