

## Smad2 (Phospho-Ser465) Antibody

Catalog No: #11838



Package Size: #11838-1 50ul #11838-2 100ul

Orders: [order@signalwayantibody.com](mailto:order@signalwayantibody.com)Support: [tech@signalwayantibody.com](mailto:tech@signalwayantibody.com)

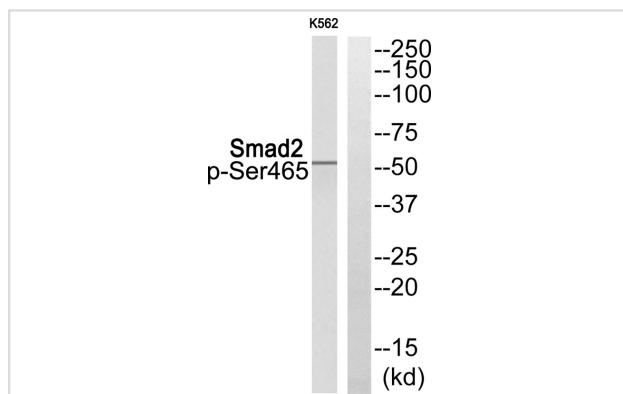
## Description

Product Name	Smad2 (Phospho-Ser465) Antibody
Host Species	Rabbit
Clonality	Polyclonal
Purification	Antibodies were produced by immunizing rabbits with synthetic phosphopeptide and KLH conjugates. Antibodies were purified by affinity-chromatography using epitope-specific phosphopeptide. Non-phospho specific antibodies were removed by chromatography using non-phosphopeptide.
Applications	WB
Species Reactivity	Hu Ms Rt
Specificity	The antibody detects endogenous levels of Smad2 only when phosphorylated at serine 465.
Immunogen Type	Peptide-KLH
Immunogen Description	Peptide sequence around phosphorylation site of Serine 465(C-S-S(p)-M-S) derived from Human Smad2.
Target Name	Smad2
Modification	Phospho
Other Names	hMAD-2; JV18; JV18-1; MAD; hSMAD2
Accession No.	Swiss-Prot#: Q15796; NCBI Gene#: 4087; NCBI Protein#: NP_001003652.1.
SDS-PAGE MW	52kd
Concentration	1.0mg/ml
Formulation	Rabbit IgG in phosphate buffered saline (without Mg <sup>2+</sup> and Ca <sup>2+</sup> ), pH 7.4, 150mM NaCl, 0.02% sodium azide and 50% glycerol.
Storage	Store at -20°C/1 year

## Application Details

Western blotting: 1:500~1:1000

## Images



Western blot analysis of extracts from K562 cells using Smad2 (Phospho-Ser465) Antibody #11838. The lane on the right is treated with the antigen-specific peptide.

## Background

---

Transcriptional modulator activated by TGF-beta and activin type 1 receptor kinase. SMAD2 is a receptor-regulated SMAD (R-SMAD). May act as a tumor suppressor in colorectal carcinoma.

Riggins G.J., Nat. Genet. 13:347-349(1996).

Zhang Y., Nature 383:168-172(1996).

Eppert K., Cell 86:543-552(1996).

---

Note: This product is for in vitro research use only and is not intended for use in humans or animals.