

BRCA2 (Phospho-Ser3291) Antibody

Catalog No: #11840



Package Size: #11840-1 50ul #11840-2 100ul

Orders: order@signalwayantibody.com

Support: tech@signalwayantibody.com

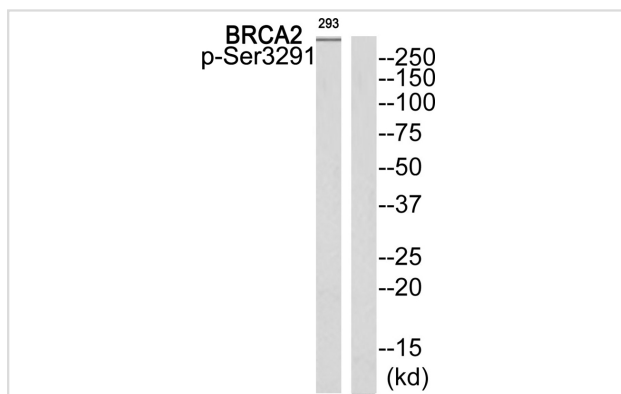
Description

Product Name	BRCA2 (Phospho-Ser3291) Antibody
Host Species	Rabbit
Clonality	Polyclonal
Purification	Antibodies were produced by immunizing rabbits with synthetic phosphopeptide and KLH conjugates. Antibodies were purified by affinity-chromatography using epitope-specific phosphopeptide. Non-phospho specific antibodies were removed by chromatography using non-phosphopeptide.
Applications	WB
Species Reactivity	Hu Ms Rt
Specificity	The antibody detects endogenous levels of BRCA2 only when phosphorylated at serine 3291.
Immunogen Type	Peptide-KLH
Immunogen Description	Peptide sequence around phosphorylation site of Serine 3291 (F-V-S(p)-P-A) derived from Human BRCA2.
Target Name	BRCA2
Modification	Phospho
Other Names	BRCC2; BRCA2; subunit 2; BRCA1/BRCA2-containing complex;
Accession No.	Swiss-Prot#: P51587; NCBI Gene#: 675; NCBI Protein#: NP_000050.2.
SDS-PAGE MW	>350kd
Concentration	1.0mg/ml
Formulation	Rabbit IgG in phosphate buffered saline (without Mg ²⁺ and Ca ²⁺), pH 7.4, 150mM NaCl, 0.02% sodium azide and 50% glycerol.
Storage	Store at -20°C/1 year

Application Details

Western blotting: 1:500~1:1000

Images



Western blot analysis of extracts from 293 cells using BRCA2 (Phospho-Ser3291) Antibody #11840. The lane on the right is treated with the antigen-specific peptide.

Background

Involved in double-strand break repair and/or homologous recombination. Binds RAD51 and potentiates recombinational DNA repair by promoting assembly of RAD51 onto single-stranded DNA (ssDNA). Acts by targeting RAD51 to ssDNA over double-stranded DNA, enabling RAD51 to displace replication protein-A (RPA) from ssDNA and stabilizing RAD51-ssDNA filaments by blocking ATP hydrolysis. Part of a PALB2-scaffolded HR complex containing RAD51C and which is thought to play a role in DNA repair by HR. May participate in S phase checkpoint activation. Binds selectively to ssDNA, and to ssDNA in tailed duplexes and replication fork structures.

Wooster R., *Nature* 378:789-792(1995).

Tavtigian S.V., *Nat. Genet.* 12:333-337(1996).

Dunham A., *Nature* 428:522-528(2004).

Note: This product is for in vitro research use only and is not intended for use in humans or animals.