

MLH1 Antibody

Catalog No: #32046

Package Size: #32046-1 50ul #32046-2 100ul

Orders: order@signalwayantibody.comSupport: tech@signalwayantibody.com

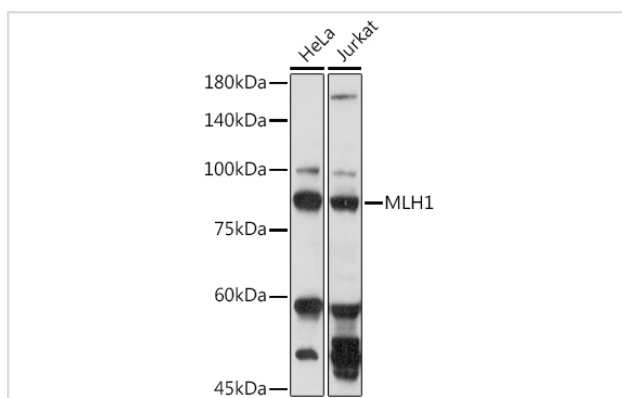
Description

Product Name	MLH1 Antibody
Host Species	Rabbit
Clonality	Polyclonal
Isotype	IgG
Purification	Affinity purification
Applications	WB
Species Reactivity	Human,Mouse,Rat
Specificity	The antibody detects endogenous level of total MLH1 protein.
Immunogen Type	Recombinant Protein
Immunogen Description	Recombinant fusion protein of human MLH1 (NP_000240.1).
Target Name	MLH1
Other Names	MLH1;COCA2;FCC2;HNPCC;HNPCC2;hMLH1
Accession No.	Uniprot:P40692GeneID:4292
SDS-PAGE MW	85KDa
Concentration	1.0mg/ml
Formulation	PBS with 0.02% sodium azide,50% glycerol,pH7.3.
Storage	Store at -20°C. Avoid freeze / thaw cycles.

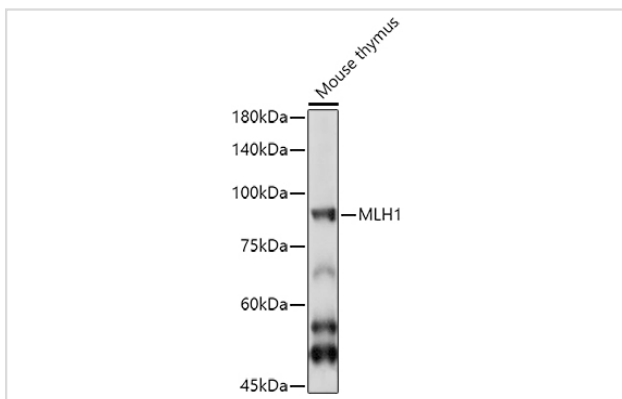
Application Details

WB □ 1:500 - 1:2000 IF □ 1:50 - 1:100

Images



Western blot analysis of extracts of various cell lines, using MLH1 antibody.



Western blot analysis of extracts of Mouse thymus cells, using MLH1 antibody.

Background

This gene was identified as a locus frequently mutated in hereditary nonpolyposis colon cancer (HNPCC). It is a human homolog of the *E. coli* DNA mismatch repair gene *mutL*, consistent with the characteristic alterations in microsatellite sequences (RER+phenotype) found in HNPCC. Alternative splicing results in multiple transcript variants encoding distinct isoforms. Additional transcript variants have been described, but their full-length natures have not been determined.

Note: This product is for in vitro research use only and is not intended for use in humans or animals.