

PPP3CA Antibody

Catalog No: #32139

Package Size: #32139-1 50ul #32139-2 100ul

Orders: order@signalwayantibody.comSupport: tech@signalwayantibody.com

Description

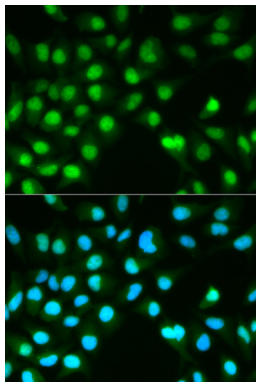
| | |
|-----------------------|--|
| Product Name | PPP3CA Antibody |
| Host Species | Rabbit |
| Clonality | Polyclonal |
| Purification | Antibodies were purified by affinity purification using immunogen. |
| Applications | WB,IF |
| Species Reactivity | Human,Mouse |
| Specificity | The antibody detects endogenous level of total PPP3CA protein. |
| Immunogen Type | Recombinant Protein |
| Immunogen Description | Recombinant protein of human PPP3CA. |
| Target Name | PPP3CA |
| Other Names | PPP3CA; CALN; CALNA; CALNA1; CCN1 |
| Accession No. | Swiss-Prot:Q08209NCBI Gene ID:5530 |
| SDS-PAGE MW | 61KD |
| Concentration | 1.0mg/ml |
| Formulation | Supplied at 1.0mg/mL in phosphate buffered saline (without Mg ²⁺ and Ca ²⁺), pH 7.4, 150mM NaCl, 0.02% sodium azide and 50% glycerol. |
| Storage | Store at -20°C |

Application Details

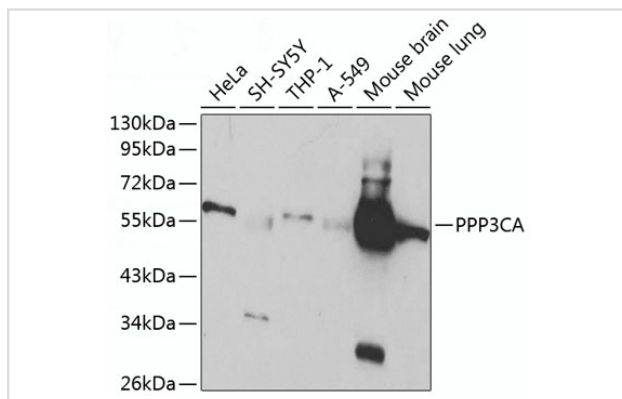
WB □ 1:500 - 1:2000

IF □ 1:50 - 1:200

Images



Immunofluorescence analysis of HeLa cells using PPP3CA antibody. Blue: DAPI for nuclear staining.



Western blot analysis of extracts of various cell lines, using PPP3CA antibody at 1:1000 dilution.

Background

In eukaryotes, the phosphorylation and dephosphorylation of proteins on serine and threonine residues is an essential means of regulating a broad range of cellular functions including division, homeostasis and apoptosis. A group of proteins that are intimately involved in this process are the protein phosphatases. In general, the protein phosphatase (PP) holoenzyme is a trimeric complex composed of a regulatory subunit, a variable subunit and a catalytic subunit. Four major families of protein phosphatase catalytic subunit have been identified, designated PP1, PP2A, PP2B and PP2C. An additional protein phosphatase catalytic subunit, PPX (also known as PP4), is a putative member of a novel PP family. The PP2B family comprises subfamily members PP2B-A?, PP2B-A¡Ò and PP2B-A?. Two additional regulatory subunits been identified, designated PP2B-B1 and PP2B-B2.

Note: This product is for in vitro research use only and is not intended for use in humans or animals.