

## MSH2 Antibody

Catalog No: #32169

Package Size: #32169-1 50ul #32169-2 100ul

Orders: order@signalwayantibody.com

Support: tech@signalwayantibody.com

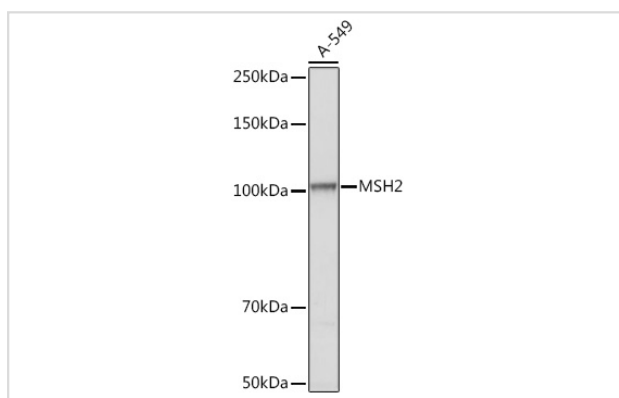
## Description

Product Name	MSH2 Antibody
Host Species	Rabbit
Clonality	Polyclonal
Isotype	IgG
Purification	Affinity purification
Applications	WB,IF
Species Reactivity	Human,Mouse,Rat
Specificity	The antibody detects endogenous level of total MSH2 protein.
Immunogen Type	Recombinant Protein
Immunogen Description	Recombinant fusion protein of human MSH2 (NP_000242.1).
Target Name	MSH2
Other Names	MSH2;COCA1;FCC1;HNPCC;HNPCC1;LCFS2
Accession No.	Uniprot:P43246GeneID:4436
SDS-PAGE MW	100KDa
Concentration	1.0mg/ml
Formulation	PBS with 0.02% sodium azide,50% glycerol,pH7.3.
Storage	Store at -20°C. Avoid freeze / thaw cycles.

## Application Details

WB □ 1:500 - 1:2000 IF □ 1:50 - 1:200

## Images



Western blot analysis of extracts of A-549 cells, using MSH2 Rabbit pAb.

## Background

This locus is frequently mutated in hereditary nonpolyposis colon cancer (HNPCC). When cloned, it was discovered to be a human homolog of the E. coli mismatch repair gene mutS, consistent with the characteristic alterations in microsatellite sequences (RER+ phenotype) found in HNPCC. Two

transcript variants encoding different isoforms have been found for this gene.

---

Note: This product is for in vitro research use only and is not intended for use in humans or animals.