

EHMT2 Antibody

Catalog No: #32257

Package Size: #32257-1 50ul #32257-2 100ul

Orders: order@signalwayantibody.com

Support: tech@signalwayantibody.com

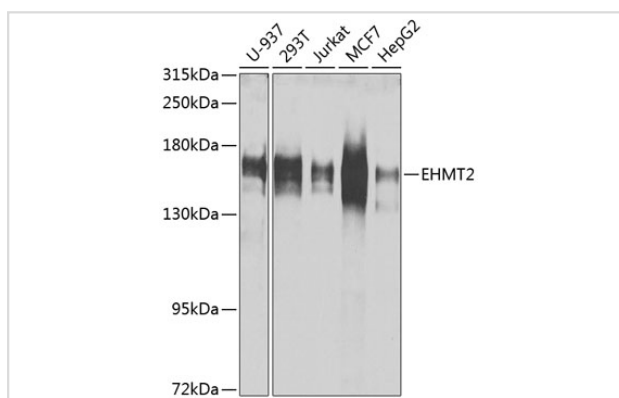
Description

Product Name	EHMT2 Antibody
Host Species	Rabbit
Clonality	Polyclonal
Isotype	IgG
Purification	Affinity purification
Applications	WB
Species Reactivity	Human,Mouse,Rat
Specificity	The antibody detects endogenous level of total EHMT2 protein.
Immunogen Type	Recombinant Protein
Immunogen Description	Recombinant fusion protein of human EHMT2 (NP_079532.5).
Target Name	EHMT2
Other Names	EHMT2;BAT8;C6orf30;G9A;GAT8;KMT1C;NG36
Accession No.	Uniprot:Q96KQ7GeneID:10919
SDS-PAGE MW	150kDa/170kDa
Concentration	1.0mg/ml
Formulation	PBS with 0.02% sodium azide,50% glycerol,pH7.3.
Storage	Store at -20°C. Avoid freeze / thaw cycles.

Application Details

WB □ 1:500 - 1:2000

Images



Western blot analysis of extracts of various cell lines, using EHMT2 antibody.

Background

This gene encodes a methyltransferase that methylates lysine residues of histone H3. Methylation of H3 at lysine 9 by this protein results in recruitment of additional epigenetic regulators and repression of transcription. This gene was initially thought to be two different genes, NG36 and

G9a, adjacent to each other in the HLA locus. Alternative splicing results in multiple transcript variants.

Note: This product is for in vitro research use only and is not intended for use in humans or animals.