

## MITF Antibody

Catalog No: #32260

Package Size: #32260-1 50ul #32260-2 100ul

Orders: order@signalwayantibody.com

Support: tech@signalwayantibody.com

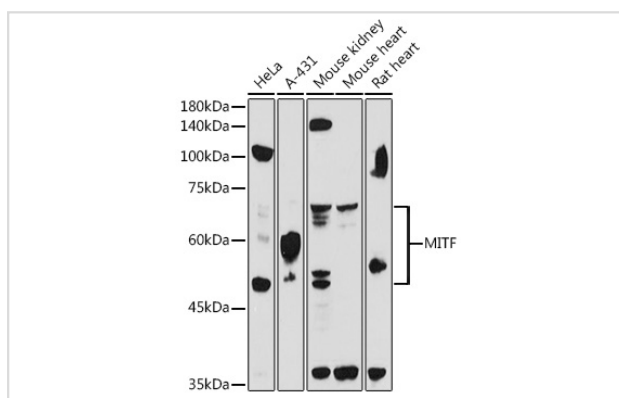
## Description

Product Name	MITF Antibody
Host Species	Rabbit
Clonality	Polyclonal
Isotype	IgG
Purification	Affinity purification
Applications	WB
Species Reactivity	Human,Mouse,Rat
Specificity	The antibody detects endogenous level of total MITF protein.
Immunogen Type	Recombinant Protein
Immunogen Description	Recombinant fusion protein of human MITF (NP_937801.1).
Target Name	MITF
Other Names	MITF;CMM8;COMMAD;MI;WS2;WS2A;bHLHe32
Accession No.	Uniprot:O75030GeneID:4286
SDS-PAGE MW	50-70KDa
Concentration	1.0mg/ml
Formulation	PBS with 0.02% sodium azide,50% glycerol,pH7.3.
Storage	Store at -20°C. Avoid freeze / thaw cycles.

## Application Details

WB □ 1:500 - 1:2000

## Images



Western blot analysis of extracts of various cell lines, using MITF antibody.

## Background

This gene encodes a transcription factor that contains both basic helix-loop-helix and leucine zipper structural features. It regulates the differentiation and development of melanocytes retinal pigment epithelium and is also responsible for pigment cell-specific transcription of the melanogenesis

enzyme genes. Heterozygous mutations in the this gene cause auditory-pigmentary syndromes, such as Waardenburg syndrome type 2 and Tietz syndrome. Alternatively spliced transcript variants encoding different isoforms have been identified.

---

Note: This product is for in vitro research use only and is not intended for use in humans or animals.