

TLR8 Antibody

Catalog No: #32289

Package Size: #32289-1 50ul #32289-2 100ul

Orders: order@signalwayantibody.comSupport: tech@signalwayantibody.com

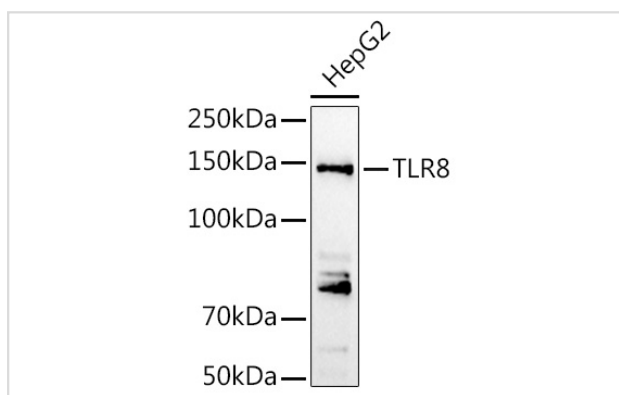
Description

Product Name	TLR8 Antibody
Host Species	Rabbit
Clonality	Polyclonal
Isotype	IgG
Purification	Affinity purification
Applications	WB,IHC,IF
Species Reactivity	Human,Mouse,Rat
Specificity	The antibody detects endogenous level of total TLR8 protein.
Immunogen Type	Recombinant Protein
Immunogen Description	Recombinant fusion protein of human TLR8 (NP_619542.1).
Target Name	TLR8
Other Names	TLR8;CD288;TLR8
Accession No.	Uniprot:Q9NR97GeneID:51311
SDS-PAGE MW	150KDa
Concentration	1.0mg/ml
Formulation	PBS with 0.02% sodium azide,50% glycerol,pH7.3.
Storage	Store at -20°C. Avoid freeze / thaw cycles.

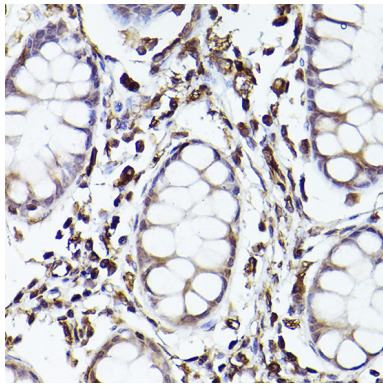
Application Details

WB □ 1:500 - 1:2000 IHC □ 1:50 - 1:200 IF □ 1:50 - 1:200

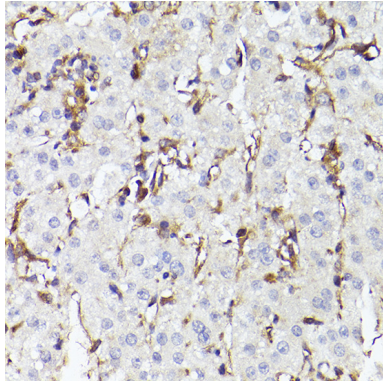
Images



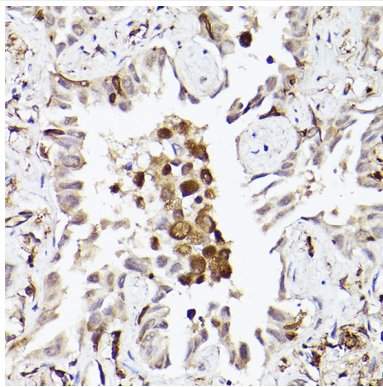
Western blot analysis of extracts of HepG2 cells, using TLR8 antibody.



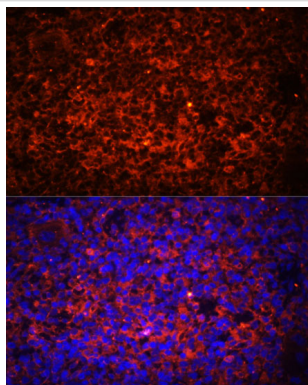
Immunohistochemistry of paraffin-embedded human colon using TLR8 Rabbit pAb.



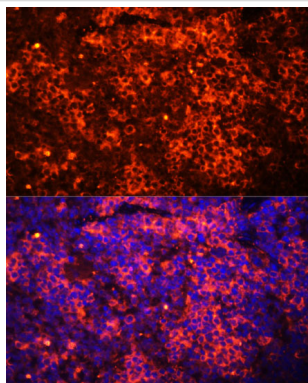
Immunohistochemistry of paraffin-embedded human liver cancer using TLR8 Rabbit pAb.



Immunohistochemistry of paraffin-embedded human lung cancer using TLR8 Rabbit pAb.



Immunofluorescence analysis of rat spleen using TLR8 Polyclonal Antibody.



Immunofluorescence analysis of mouse spleen using TLR8 Polyclonal Antibody.

Background

The protein encoded by this gene is a member of the Toll-like receptor (TLR) family which plays a fundamental role in pathogen recognition and activation of innate immunity. TLRs are highly conserved from *Drosophila* to humans and share structural and functional similarities. They recognize pathogen-associated molecular patterns (PAMPs) that are expressed on infectious agents, and mediate the production of cytokines necessary for the development of effective immunity. The various TLRs exhibit different patterns of expression. This gene is predominantly expressed in lung and peripheral blood leukocytes, and lies in close proximity to another family member, TLR7, on chromosome X.

Note: This product is for in vitro research use only and is not intended for use in humans or animals.