

NAT1 Antibody

Catalog No: #32310

Package Size: #32310-1 50ul #32310-2 100ul

Orders: order@signalwayantibody.com

Support: tech@signalwayantibody.com

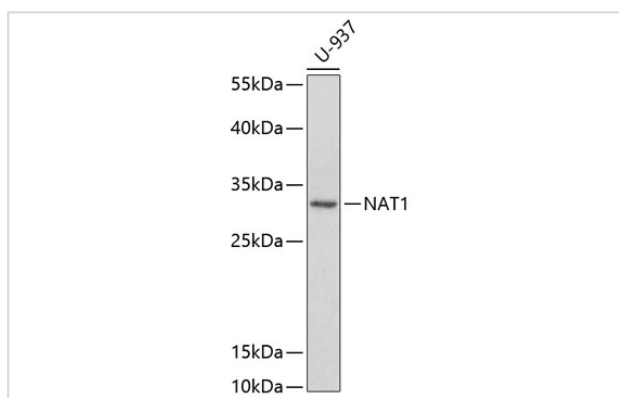
Description

Product Name	NAT1 Antibody
Host Species	Rabbit
Clonality	Polyclonal
Purification	Antibodies were purified by affinity purification using immunogen.
Applications	WB,IHC
Species Reactivity	Human
Specificity	The antibody detects endogenous level of total NAT1 protein.
Immunogen Type	Recombinant Protein
Immunogen Description	Recombinant protein of human NAT1.
Target Name	NAT1
Other Names	AAC1; MNAT; NATI; NAT-1;
Accession No.	Swiss-Prot:P18440NCBI Gene ID:9
SDS-PAGE MW	34KD
Concentration	1.0mg/ml
Formulation	Supplied at 1.0mg/mL in phosphate buffered saline (without Mg ²⁺ and Ca ²⁺), pH 7.4, 150mM NaCl, 0.02% sodium azide and 50% glycerol.
Storage	Store at -20°C

Application Details

WB □ 1:500 - 1:2000 IHC □ 1:50 - 1:100

Images



Western blot analysis of extracts of U-937 cells, using NAT1 antibody at 1:1000 dilution.

Background

This gene is one of two arylamine N-acetyltransferase (NAT) genes in the human genome, and is orthologous to the mouse and rat Nat2 genes. The enzyme encoded by this gene catalyzes the transfer of an acetyl group from acetyl-CoA to various arylamine and hydrazine substrates. This enzyme

helps metabolize drugs and other xenobiotics, and functions in folate catabolism. Multiple transcript variants encoding different isoforms have been found for this gene.

Note: This product is for in vitro research use only and is not intended for use in humans or animals.