

ELAVL1 Antibody

Catalog No: #32337



Package Size: #32337-1 50ul #32337-2 100ul

Orders: order@signalwayantibody.com

Support: tech@signalwayantibody.com

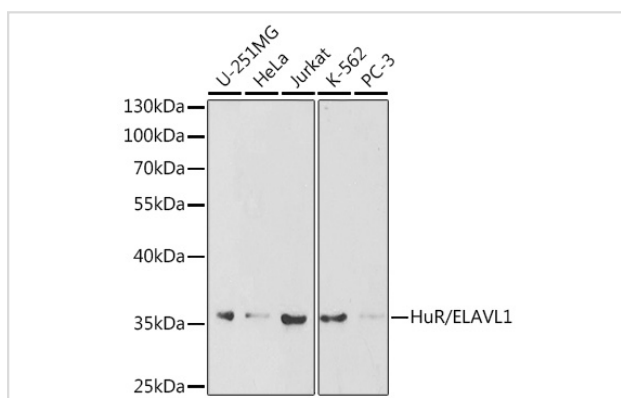
Description

Product Name	ELAVL1 Antibody
Host Species	Rabbit
Clonality	Polyclonal
Isotype	IgG
Purification	Affinity purification
Applications	WB,IHC,IF
Species Reactivity	Human,Mouse,Rat
Specificity	The antibody detects endogenous level of total ELAVL1 protein.
Immunogen Type	Recombinant Protein
Immunogen Description	Recombinant fusion protein of human HuR/ELAVL1 (NP_001410.2).
Target Name	ELAVL1
Other Names	ELAV1;HUR;Hua;MeIG;HuR / ELAVL1;ELAVL1
Accession No.	Uniprot:Q15717GeneID:1994
SDS-PAGE MW	37kDa
Concentration	1.0mg/ml
Formulation	PBS with 0.02% sodium azide,50% glycerol,pH7.3.
Storage	Store at -20°C. Avoid freeze / thaw cycles.

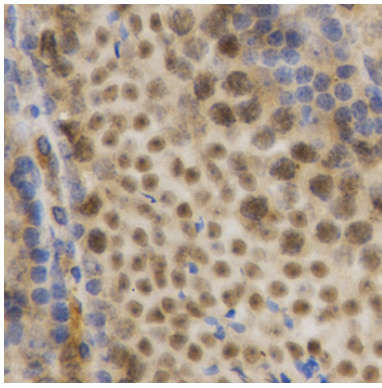
Application Details

WB 1:500 - 1:2000 IHC 1:100 - 1:200 IF 1:50 - 1:200

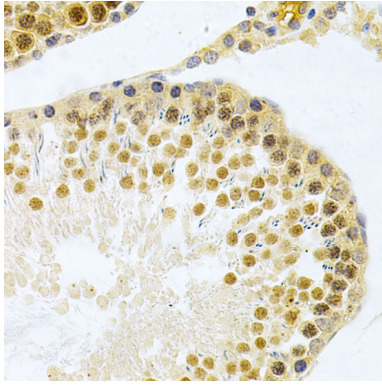
Images



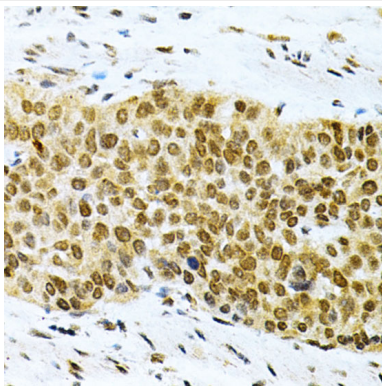
Western blot analysis of extracts of various cell lines, using HuR/ELAVL1 antibody.



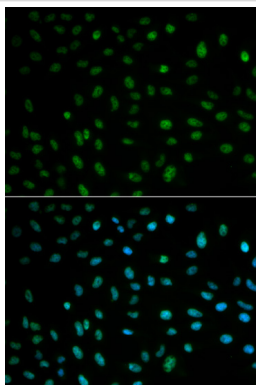
Immunohistochemistry of paraffin-embedded mouse testis using HuR/ELAVL1 Antibody.



Immunohistochemistry of paraffin-embedded rat testis using HuR/ELAVL1 Antibody.



Immunohistochemistry of paraffin-embedded human esophageal cancer using HuR/ELAVL1 Antibody.



Immunofluorescence analysis of MCF-7 cells using HuR/ELAVL1 antibody.

Background

The protein encoded by this gene is a member of the ELAVL family of RNA-binding proteins that contain several RNA recognition motifs, and selectively bind AU-rich elements (AREs) found in the 3' untranslated regions of mRNAs. AREs signal degradation of mRNAs as a means to regulate gene expression, thus by binding AREs, the ELAVL family of proteins play a role in stabilizing ARE-containing mRNAs. This gene has been implicated in a variety of biological processes and has been linked to a number of diseases, including cancer. It is highly expressed in many cancers, and could be potentially useful in cancer diagnosis, prognosis, and therapy.

Note: This product is for in vitro research use only and is not intended for use in humans or animals.