

MBP Antibody

Catalog No: #32374



Package Size: #32374-1 50ul #32374-2 100ul

Orders: order@signalwayantibody.com

Support: tech@signalwayantibody.com

Description

Product Name	MBP Antibody
Host Species	Rabbit
Clonality	Polyclonal
Purification	Antibodies were purified by affinity purification using immunogen.
Applications	WB IHC IF/ICC
Species Reactivity	Hu Ms Rt
Specificity	The antibody detects endogenous level of total MBP protein.
Immunogen Type	Recombinant Protein
Immunogen Description	Recombinant protein of human MBP.
Target Name	MBP
Other Names	MGC99675;
Accession No.	Swiss-Prot:P02686NCBI Gene ID:4155
SDS-PAGE MW	33KD
Concentration	1.0mg/ml
Formulation	Supplied at 1.0mg/mL in phosphate buffered saline (without Mg ²⁺ and Ca ²⁺), pH 7.4, 150mM NaCl, 0.02% sodium azide and 50% glycerol.
Storage	Store at -20°C

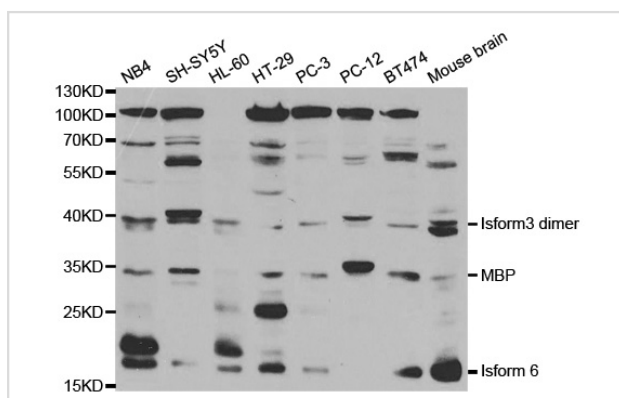
Application Details

WB □ 1:500 - 1:2000

IHC □ 1:50 - 1:200

IF/ICC 1:50 - 1:200

Images



Western blot analysis of extracts of various cell lines, using MBP antibody.

Background

MBP belongs to the myelin basic protein family. The classic group of MBP isoforms (isoform 4-isoform 14) are the most abundant protein components of the myelin membrane in the CNS. They have a role in both its formation and stabilization. The smaller isoforms might have an important role in remyelination of denuded axons in multiple sclerosis. The non-classic group of MBP isoforms (isoform 1-isoform 3/Golli-MBPs) may preferentially have a role in the early developing brain long before myelination, maybe as components of transcriptional complexes, and may also be involved in signaling pathways in T-cells and neural cells. This is a rabbit polyclonal antibody raised against the full-length of human MBP, and is capable of recognizing multiple isoforms of MBP.

Note: This product is for in vitro research use only and is not intended for use in humans or animals.