

PGF Antibody

Catalog No: #32404

Orders: order@signalwayantibody.comSupport: tech@signalwayantibody.com

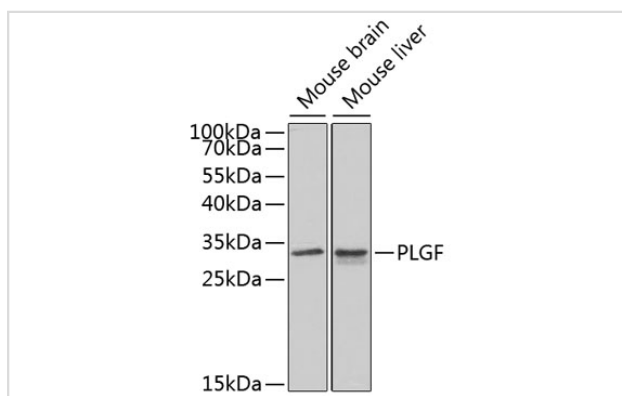
Description

Product Name	PGF Antibody
Host Species	Rabbit
Clonality	Polyclonal
Isotype	IgG
Purification	Affinity purification
Applications	WB,ELISA
Species Reactivity	Human,Mouse,Rat
Specificity	The antibody detects endogenous level of total PGF protein.
Immunogen Type	Recombinant Protein
Immunogen Description	Recombinant fusion protein of human PLGF (NP_002623.2).
Target Name	PGF
Other Names	PGF;D12S1900;PGFL;PIGF;PLGF;PIGF-2;SHGC-10760
Accession No.	Uniprot:P49763GenelD:5228
SDS-PAGE MW	25kDa/50kDa
Concentration	1.0mg/ml
Formulation	PBS with 0.02% sodium azide,50% glycerol,pH7.3.
Storage	Store at -20°C. Avoid freeze / thaw cycles.

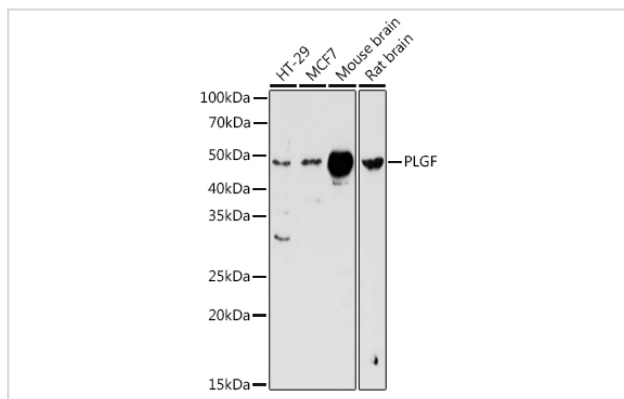
Application Details

WB □ 1:500 - 1:2000

Images



Western blot analysis of extracts of various cell lines, using PLGF antibody.



Western blot analysis of extracts of various cell lines, using PLGF antibody.

Background

This gene encodes a growth factor found in placenta which is homologous to vascular endothelial growth factor. Alternatively spliced transcripts encoding different isoforms have been found for this gene.

Note: This product is for in vitro research use only and is not intended for use in humans or animals.