

ODC1 Antibody

Catalog No: #32515

Package Size: #32515-1 50ul #32515-2 100ul

Orders: order@signalwayantibody.com

Support: tech@signalwayantibody.com

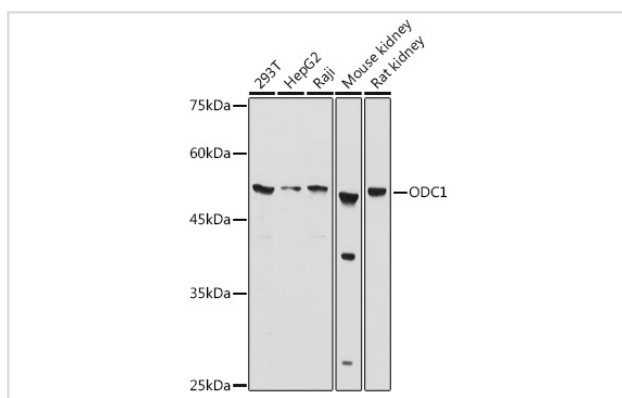
Description

Product Name	ODC1 Antibody
Host Species	Rabbit
Clonality	Polyclonal
Isotype	IgG
Purification	Affinity purification
Applications	WB,IF
Species Reactivity	Human,Mouse,Rat
Specificity	The antibody detects endogenous level of total ODC1 protein.
Immunogen Type	Recombinant Protein
Immunogen Description	Recombinant fusion protein of human ODC1 (NP_002530.1).
Target Name	ODC1
Other Names	ODC;ODC1
Accession No.	Uniprot:P11926GeneID:4953
SDS-PAGE MW	51KDa
Concentration	1.0mg/ml
Formulation	PBS with 0.02% sodium azide,50% glycerol,pH7.3.
Storage	Store at -20°C. Avoid freeze / thaw cycles.

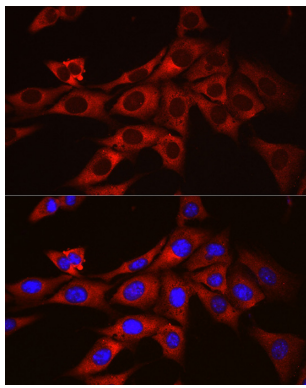
Application Details

WB □ 1:500 - 1:2000 IF □ 1:50 - 1:200

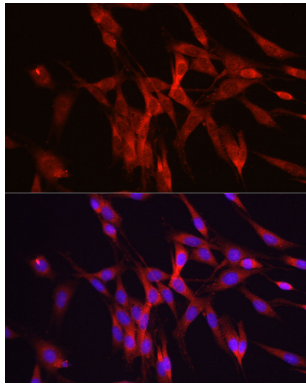
Images



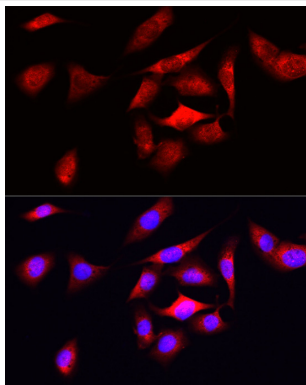
Western blot analysis of extracts of various cell lines, using ODC1 antibody.



Immunofluorescence analysis of NIH/3T3 cells using ODC1 Rabbit pAb.



Immunofluorescence analysis of PC-12 cells using ODC1 Rabbit pAb.



Immunofluorescence analysis of U2OS cells using ODC1 Rabbit pAb.

Background

This gene encodes the rate-limiting enzyme of the polyamine biosynthesis pathway which catalyzes ornithine to putrescine. The activity level for the enzyme varies in response to growth-promoting stimuli and exhibits a high turnover rate in comparison to other mammalian proteins. Originally localized to both chromosomes 2 and 7, the gene encoding this enzyme has been determined to be located on 2p25, with a pseudogene located on 7q31-qter. Multiple alternatively spliced transcript variants encoding distinct isoforms have been identified.

Note: This product is for in vitro research use only and is not intended for use in humans or animals.