

## NDP Antibody

Catalog No: #32523

Package Size: #32523-1 50ul #32523-2 100ul

Orders: [order@signalwayantibody.com](mailto:order@signalwayantibody.com)Support: [tech@signalwayantibody.com](mailto:tech@signalwayantibody.com)

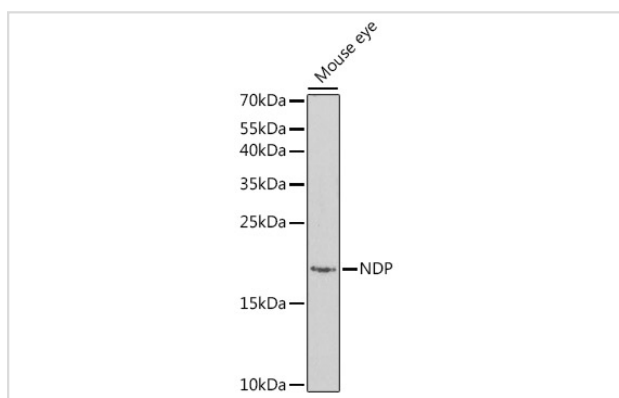
## Description

Product Name	NDP Antibody
Host Species	Rabbit
Clonality	Polyclonal
Purification	Antibodies were purified by affinity purification using immunogen.
Applications	WB
Species Reactivity	Mouse
Specificity	The antibody detects endogenous level of total NDP protein.
Immunogen Type	Recombinant Protein
Immunogen Description	Recombinant protein of human NDP.
Target Name	NDP
Other Names	ND; EVR2; FEVR;
Accession No.	Swiss-Prot:Q00604NCBI Gene ID:4693
SDS-PAGE MW	15KD
Concentration	1.0mg/ml
Formulation	Supplied at 1.0mg/mL in phosphate buffered saline (without Mg <sup>2+</sup> and Ca <sup>2+</sup> ), pH 7.4, 150mM NaCl, 0.02% sodium azide and 50% glycerol.
Storage	Store at -20°C

## Application Details

WB □ 1:500 - 1:2000

## Images



Western blot analysis of extracts of mouse eye, using NDP antibody at 1:1000 dilution.

## Background

This gene encodes a secreted protein with a cystein-knot motif that activates the Wnt/beta-catenin pathway. The protein forms disulfide-linked oligomers in the extracellular matrix. Mutations in this gene result in Norrie disease and X-linked exudative vitreoretinopathy.

---

Note: This product is for in vitro research use only and is not intended for use in humans or animals.