

# BIM(Ab-69) Antibody

Catalog No: #21280

Package Size: #21280-1 50ul #21280-2 100ul

Orders: [order@signalwayantibody.com](mailto:order@signalwayantibody.com)Support: [tech@signalwayantibody.com](mailto:tech@signalwayantibody.com)

## Description

|                       |   |
|-----------------------|---|
| Product Name          | BIM(Ab-69) Antibody   |
| Host Species          | Rabbit  |
| Clonality             | Polyclonal  |
| Purification          | Antibodies were produced by immunizing rabbits with synthetic peptide and KLH conjugates. Antibodies were purified by affinity-chromatography using epitope-specific peptide. |
| Applications          | WB IHC  |
| Species Reactivity    | Hu Ms Rt  |
| Specificity           | The antibody detects endogenous level of total BIM protein.   |
| Immunogen Type        | Peptide-KLH   |
| Immunogen Description | Peptide sequence around aa.67~71 (P-A-S-P-G) derived from Human BIM.  |
| Target Name           | BIM   |
| Other Names           | BCL2-like protein 11; BCL2L11; BOD; Bcl-2 related ovarian death protein;  |
| Accession No.         | Swiss-Prot: O43521NCBI Protein: NP_006529.1   |
| Concentration         | 1.0mg/ml  |
| Formulation           | Supplied at 1.0mg/mL in phosphate buffered saline (without Mg <sup>2+</sup> and Ca <sup>2+</sup> ), pH 7.4, 150mM NaCl, 0.02% sodium azide and 50% glycerol.                  |
| Storage               | Store at -20°C for long term preservation (recommended). Store at 4°C for short term use.   |

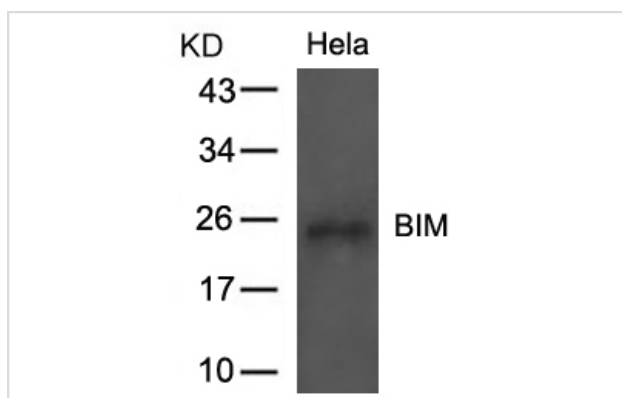
## Application Details

Predicted MW: 23kd

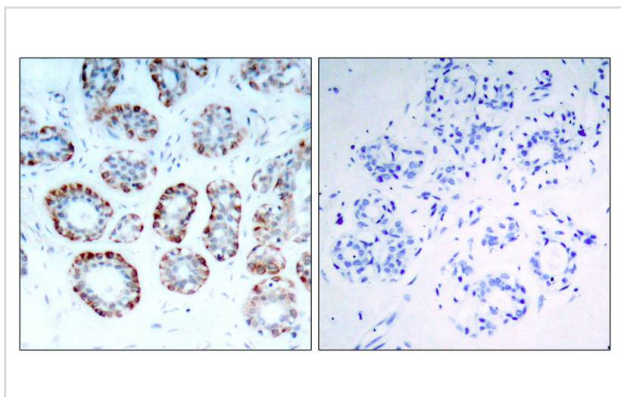
Western blotting: 1:500~1:1000

Immunohistochemistry: 1:50~1:100

## Images



Western blot analysis of extracts from HeLa cells using BIM(Ab-69) Antibody #21280.



Immunohistochemical analysis of paraffin-embedded human breast carcinoma tissue using BIM(Ab-69) Antibody #21280(left) or the same antibody preincubated with blocking peptide(right).

## Background

Induces apoptosis. Isoform BimL is more potent than isoform BimEL. Isoform Bim-a1, isoform Bim-a2 and isoform Bim-a3 induce apoptosis, although less potent than the isoforms BimEL, BimL and BimS. Isoform Bim-gamma induces apoptosis.

Fukazawa H, et al. (2004) Mol Cancer Ther ; 3(10): 1281-1288

Luciano F, et al. (2003) Oncogene ; 22(43): 6785-6793

## Published Papers

el at., Elucidating the role of the FoxO3a transcription factor in the IGF-1-induced migration and invasion of uveal melanoma cancer cells. In Biomed Pharmacother on 2016 Dec by Fengxia Yan , Rifang Liao et al..PMID: 27881235, , (2016)

[PMID:27881235](#)

Note: This product is for in vitro research use only and is not intended for use in humans or animals.