

UCHL1 Antibody

Catalog No: #32615

Package Size: #32615-1 50ul #32615-2 100ul

Orders: order@signalwayantibody.com

Support: tech@signalwayantibody.com

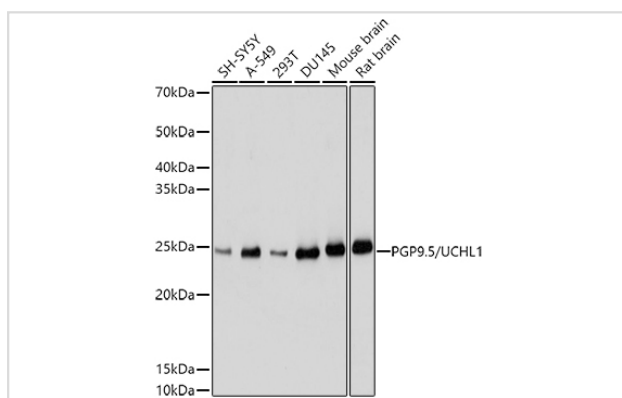
Description

Product Name	UCHL1 Antibody
Host Species	Rabbit
Clonality	Polyclonal
Isotype	IgG
Purification	Affinity purification
Applications	WB,IF
Species Reactivity	Human,Mouse,Rat
Specificity	The antibody detects endogenous level of total UCHL1 protein.
Immunogen Type	Recombinant Protein
Immunogen Description	Recombinant fusion protein of human PGP9.5/PGP9.5/UCHL1 (NP_004172.2).
Target Name	UCHL1
Other Names	HEL-117;HEL-S-53;NDGOA;PARK5;PGP 9.5;PGP9.5;PGP95;SPG79;Uch-L1;UCHL1
Accession No.	Uniprot:P09936GeneID:7345
SDS-PAGE MW	27KDa
Concentration	1.0mg/ml
Formulation	PBS with 0.02% sodium azide,50% glycerol,pH7.3.
Storage	Store at -20°C. Avoid freeze / thaw cycles.

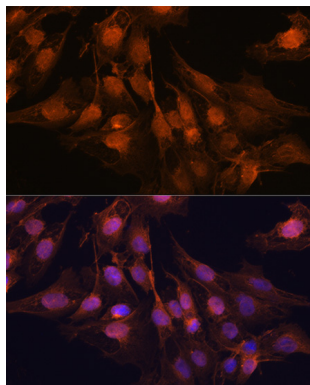
Application Details

WB □ 1:500 - 1:2000 IF □ 1:50 - 1:200

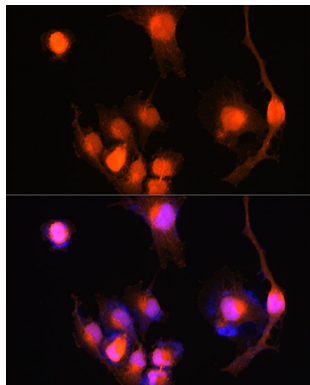
Images



Western blot analysis of extracts of various cell lines, using PGP9.5/UCHL1 antibody.



Immunofluorescence analysis of C6 cells using PGP9.5/PGP9.5/UCHL1 Rabbit pAb.



Immunofluorescence analysis of U-251 MG cells using PGP9.5/PGP9.5/UCHL1 Rabbit pAb.

Background

The protein encoded by this gene belongs to the peptidase C12 family. This enzyme is a thiol protease that hydrolyzes a peptide bond at the C-terminal glycine of ubiquitin. This gene is specifically expressed in the neurons and in cells of the diffuse neuroendocrine system. Mutations in this gene may be associated with Parkinson disease.

Note: This product is for in vitro research use only and is not intended for use in humans or animals.