

UBE2I Antibody

Catalog No: #32656



Package Size: #32656-1 50ul #32656-2 100ul

Orders: order@signalwayantibody.com

Support: tech@signalwayantibody.com

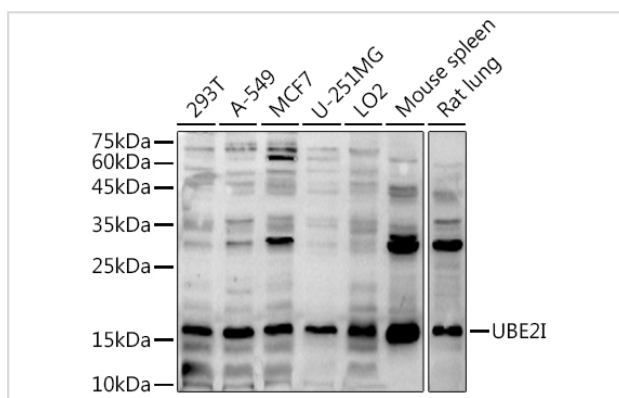
Description

Product Name	UBE2I Antibody
Host Species	Rabbit
Clonality	Polyclonal
Isotype	IgG
Purification	Affinity purification
Applications	WB,IHC,IF
Species Reactivity	Human,Mouse,Rat
Specificity	The antibody detects endogenous level of total UBE2I protein.
Immunogen Type	Recombinant Protein
Immunogen Description	Recombinant fusion protein of human UBE2I (NP_003336.1).
Target Name	UBE2I
Other Names	UBE2I;C358B7.1;P18;UBC9
Accession No.	Uniprot:P63279GenelD:7329
SDS-PAGE MW	18KDa
Concentration	1.0mg/ml
Formulation	PBS with 0.02% sodium azide,50% glycerol,pH7.3.
Storage	Store at -20°C. Avoid freeze / thaw cycles.

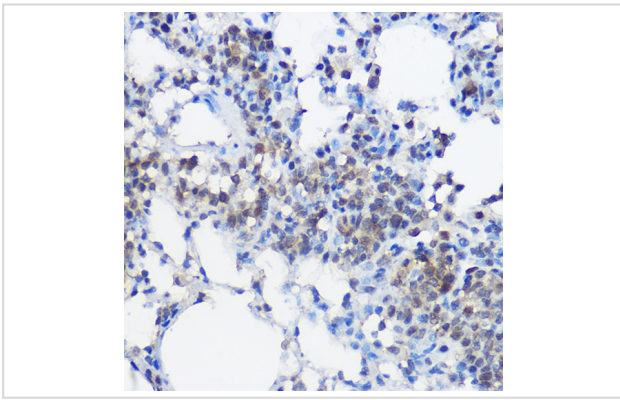
Application Details

WB □ 1:500 - 1:2000 IHC □ 1:50 - 1:200 IF □ 1:50 - 1:200

Images



Western blot analysis of extracts of various cell lines, using .



Immunohistochemistry of paraffin-embedded rat lung using UBE2I Rabbit pAb.

Background

The modification of proteins with ubiquitin is an important cellular mechanism for targeting abnormal or short-lived proteins for degradation. Ubiquitination involves at least three classes of enzymes: ubiquitin-activating enzymes, or E1s, ubiquitin-conjugating enzymes, or E2s, and ubiquitin-protein ligases, or E3s. This gene encodes a member of the E2 ubiquitin-conjugating enzyme family. Four alternatively spliced transcript variants encoding the same protein have been found for this gene.

Note: This product is for in vitro research use only and is not intended for use in humans or animals.