

# YWHAQ Antibody

Catalog No: #32715



Package Size: #32715-1 50ul #32715-2 100ul

Orders: [order@signalwayantibody.com](mailto:order@signalwayantibody.com)  
Support: [tech@signalwayantibody.com](mailto:tech@signalwayantibody.com)

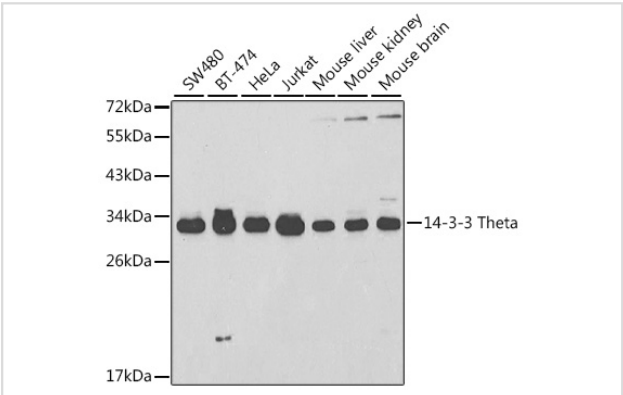
## Description

Product Name	YWHAQ Antibody
Host Species	Rabbit
Clonality	Polyclonal
Isotype	IgG
Purification	Affinity purification
Applications	WB,IHC
Species Reactivity	Human,Mouse,Rat
Specificity	The antibody detects endogenous level of total YWHAQ protein.
Immunogen Type	Recombinant Protein
Immunogen Description	Recombinant fusion protein of human 14-3-3 Theta (NP_006817.1).
Target Name	YWHAQ
Other Names	YWHAQ;14-3-3;1C5;HS1
Accession No.	Uniprot:P27348GeneID:10971
SDS-PAGE MW	32kDa
Concentration	1.0mg/ml
Formulation	PBS with 0.02% sodium azide,50% glycerol,pH7.3.
Storage	Store at -20°C. Avoid freeze / thaw cycles.

## Application Details

WB 1:500 - 1:2000IHC 1:50 - 1:100

## Images



Western blot analysis of extracts of various cell lines, using 14-3-3 Theta antibody.

## Background

This gene product belongs to the 14-3-3 family of proteins which mediate signal transduction by binding to phosphoserine-containing proteins. This highly conserved protein family is found in both plants and mammals, and this protein is 99% identical to the mouse and rat orthologs. This gene is

upregulated in patients with amyotrophic lateral sclerosis. It contains in its 5' UTR a 6 bp tandem repeat sequence which is polymorphic, however, there is no correlation between the repeat number and the disease.

---

Note: This product is for in vitro research use only and is not intended for use in humans or animals.