

## EIF4A1 Antibody

Catalog No: #32748

Package Size: #32748-1 50ul #32748-2 100ul

Orders: order@signalwayantibody.com

Support: tech@signalwayantibody.com

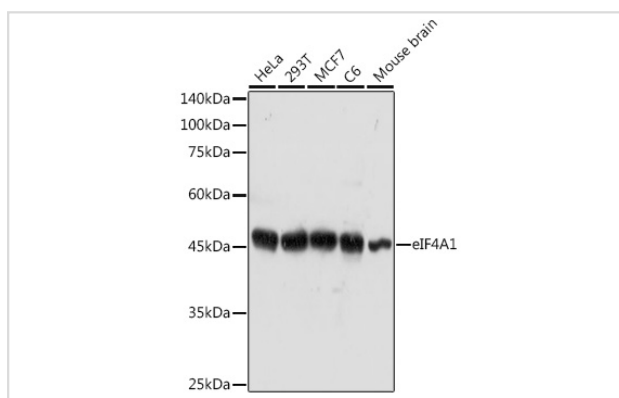
## Description

Product Name	EIF4A1 Antibody
Host Species	Rabbit
Clonality	Polyclonal
Isotype	IgG
Purification	Affinity purification
Applications	WB,IF
Species Reactivity	Human,Mouse,Rat
Specificity	The antibody detects endogenous level of total EIF4A1 protein.
Immunogen Type	Recombinant Protein
Immunogen Description	Recombinant fusion protein of human eIF4A1 (NP_001407.1).
Target Name	EIF4A1
Other Names	EIF4A1;DDX2A;EIF-4A;EIF4A;eIF-4A-I;eIF4A-I
Accession No.	Uniprot:P60842GeneID:1973
SDS-PAGE MW	45KDa
Concentration	1.0mg/ml
Formulation	PBS with 0.02% sodium azide,50% glycerol,pH7.3.
Storage	Store at -20°C. Avoid freeze / thaw cycles.

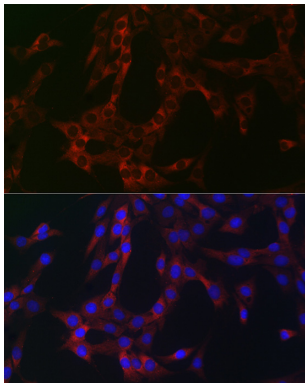
## Application Details

WB □ 1:500 - 1:2000 IF □ 1:20 - 1:50

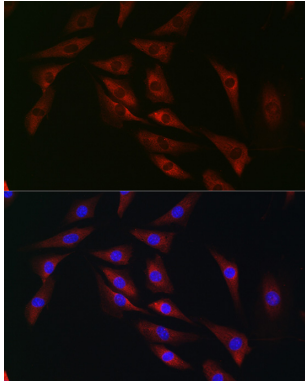
## Images



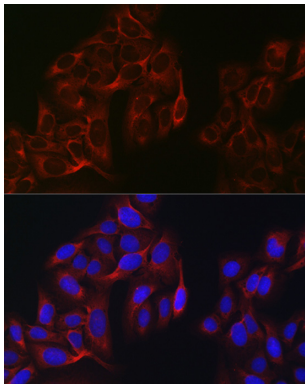
Western blot analysis of extracts of various cell lines, using eIF4A1 antibody.



Immunofluorescence analysis of C6 cells using eIF4A1 Rabbit pAb.



Immunofluorescence analysis of NIH/3T3 cells using eIF4A1 Rabbit pAb.



Immunofluorescence analysis of U2OS cells using eIF4A1 Rabbit pAb.

## Background

ATP-dependent RNA helicase which is a subunit of the eIF4F complex involved in cap recognition and is required for mRNA binding to ribosome. In the current model of translation initiation, eIF4A unwinds RNA secondary structures in the 5'-UTR of mRNAs which is necessary to allow efficient binding of the small ribosomal subunit, and subsequent scanning for the initiator codon.

Note: This product is for in vitro research use only and is not intended for use in humans or animals.