

CHRNA1 Antibody

Catalog No: #32760

Package Size: #32760-1 50ul #32760-2 100ul

Orders: order@signalwayantibody.com

Support: tech@signalwayantibody.com

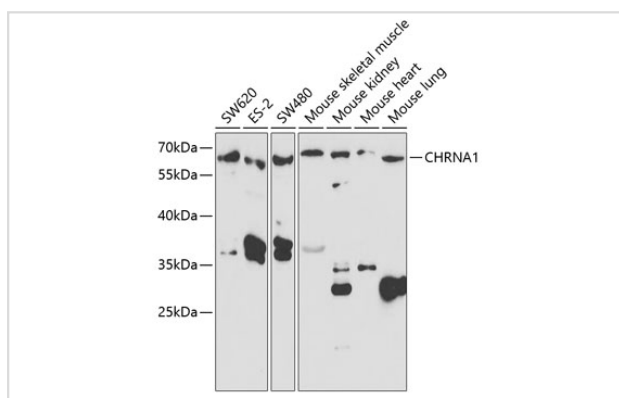
Description

| | |
|-----------------------|--|
| Product Name | CHRNA1 Antibody |
| Host Species | Rabbit |
| Clonality | Polyclonal |
| Purification | Antibodies were purified by affinity purification using immunogen. |
| Applications | WB |
| Species Reactivity | Human, Mouse |
| Specificity | The antibody detects endogenous level of total CHRNA1 protein. |
| Immunogen Type | Recombinant Protein |
| Immunogen Description | Recombinant protein of human CHRNA1. |
| Target Name | CHRNA1 |
| Other Names | ACHRA; ACHRD; CHRNA; CMS2A; FCCMS |
| Accession No. | Swiss-Prot:P02708NCBI Gene ID:1134 |
| SDS-PAGE MW | 31KD |
| Concentration | 1.0mg/ml |
| Formulation | Supplied at 1.0mg/mL in phosphate buffered saline (without Mg ²⁺ and Ca ²⁺), pH 7.4, 150mM NaCl, 0.02% sodium azide and 50% glycerol. |
| Storage | Store at -20°C |

Application Details

WB □ 1:500 - 1:2000

Images



Western blot analysis of extracts of various cell lines, using CHRNA1 antibody at 1:1000 dilution.

Background

The muscle acetylcholine receptor consists of 5 subunits of 4 different types: 2 alpha subunits and 1 each of the beta, gamma, and delta subunits. This gene encodes an alpha subunit that plays a role in acetylcholine binding/channel gating. Alternatively spliced transcript variants encoding different

isoforms have been identified.

Published Papers

el at., Design and synthesis of a clickable, photoreactive amino acid p-(4-(but-3-yn-1-yl)benzoyl)-l-phenylalanine for peptide photoaffinity labelingInRSC AdvOn2023 Jan 4byPenggang Han?1,?Fuli Wang et al..PMID:?36686919, , (2023)

[PMID:36686919](#)

Note: This product is for in vitro research use only and is not intended for use in humans or animals.