

MPG Antibody

Catalog No: #32837



Package Size: #32837-1 50ul #32837-2 100ul

Orders: order@signalwayantibody.com

Support: tech@signalwayantibody.com

Description

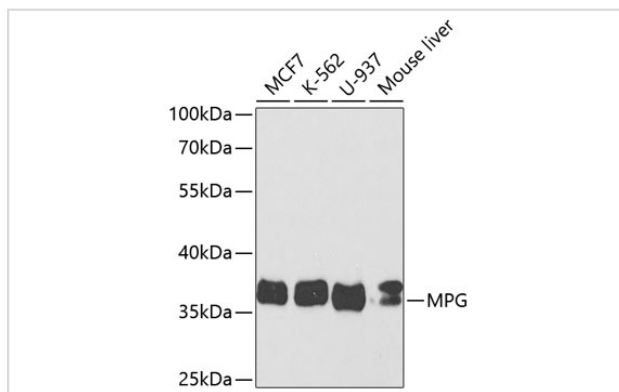
Product Name	MPG Antibody
Host Species	Rabbit
Clonality	Polyclonal
Isotype	IgG
Purification	Affinity purification
Applications	WB,IHC,ELISA
Species Reactivity	Human
Specificity	The antibody detects endogenous level of total MPG protein.
Immunogen Type	Recombinant Protein
Immunogen Description	Recombinant fusion protein of human MPG (NP_001015052.1).
Target Name	MPG
Other Names	MPG;AAG;ADPG;APNG;CRA36.1;MDG;Mid1;PIG11;PIG16;anpg
Accession No.	Uniprot:P29372GeneID:4350
SDS-PAGE MW	37kDa
Concentration	1.0mg/ml
Formulation	PBS with 0.02% sodium azide,50% glycerol,pH7.3.
Storage	Store at -20°C. Avoid freeze / thaw cycles.

Application Details

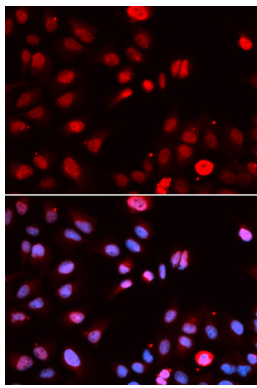
WB □ 1:500 - 1:2000

IF □ 1:50 - 1:100

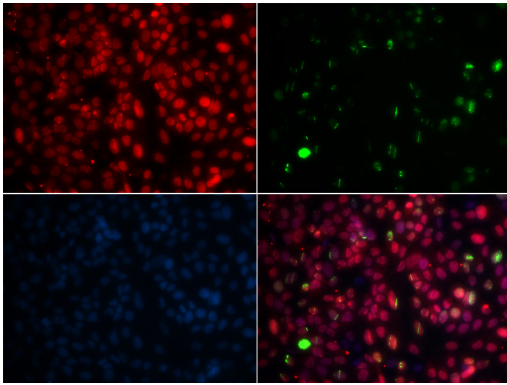
Images



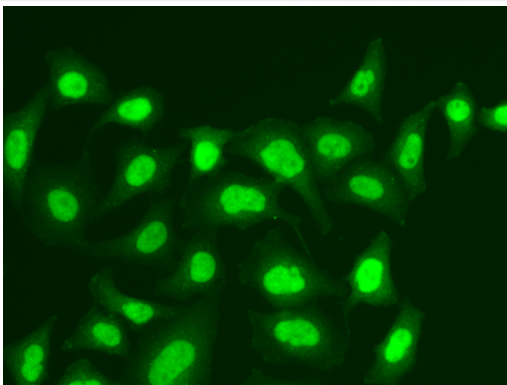
Western blot analysis of extracts of various cell lines, using MPG antibody.



Immunofluorescence analysis of U2OS cells using MPG antibody.



Immunofluorescence analysis of GFP-RNF168 transgenic U2OS cells using MPG antibody.



Immunofluorescence analysis of A549 cells using MPG antibody.

Background

Hydrolysis of the deoxyribose N-glycosidic bond to excise 3-methyladenine, and 7-methylguanine from the damaged DNA polymer formed by alkylation lesions.

Note: This product is for in vitro research use only and is not intended for use in humans or animals.