

## TLE1 Antibody

Catalog No: #32891

Package Size: #32891-1 50ul #32891-2 100ul

Orders: order@signalwayantibody.com

Support: tech@signalwayantibody.com

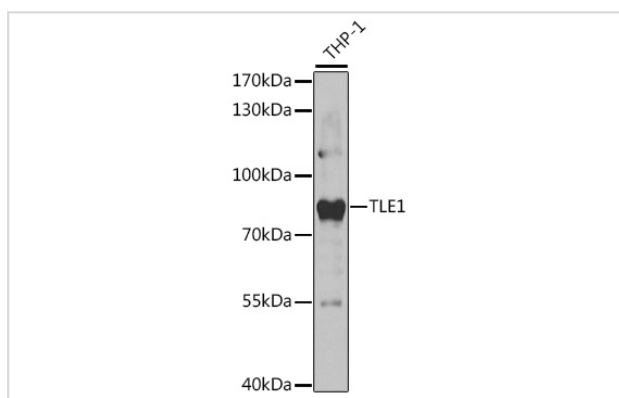
## Description

|                       |  |
|-----------------------|--|
| Product Name          | TLE1 Antibody  |
| Host Species          | Rabbit   |
| Clonality             | Polyclonal   |
| Isotype               | IgG  |
| Purification          | Affinity purification  |
| Applications          | WB   |
| Species Reactivity    | Human  |
| Specificity           | The antibody detects endogenous level of total TLE1 protein. |
| Immunogen Type        | Recombinant Protein  |
| Immunogen Description | Recombinant fusion protein of human TLE1 (NP_005068.2).      |
| Target Name           | TLE1   |
| Other Names           | TLE1;ESG;ESG1;GRG1   |
| Accession No.         | Uniprot:Q04724GeneID:7088                                    |
| SDS-PAGE MW           | 83kDa  |
| Concentration         | 1.0mg/ml   |
| Formulation           | PBS with 0.02% sodium azide,50% glycerol,pH7.3.              |
| Storage               | Store at -20°C. Avoid freeze / thaw cycles.                  |

## Application Details

WB □ 1:500 - 1:2000

## Images



Western blot analysis of extracts of THP-1 cells, using TLE1 antibody.

## Background

Transcriptional corepressor that binds to a number of transcription factors. Inhibits NF-kappa-B-regulated gene expression. Inhibits the transcriptional activation mediated by FOXA2, and by CTNNB1 and TCF family members in Wnt signaling. Enhances FOXG1/BF-1- and HES1-mediated

transcriptional repression (By similarity. The effects of full-length TLE family members may be modulated by association with dominant-negative AES.  
Unusual function as coactivator for ESRRG.

---

Note: This product is for in vitro research use only and is not intended for use in humans or animals.