

DCLRE1C Antibody

Catalog No: #32923

Package Size: #32923-1 50ul #32923-2 100ul

Orders: order@signalwayantibody.com

Support: tech@signalwayantibody.com

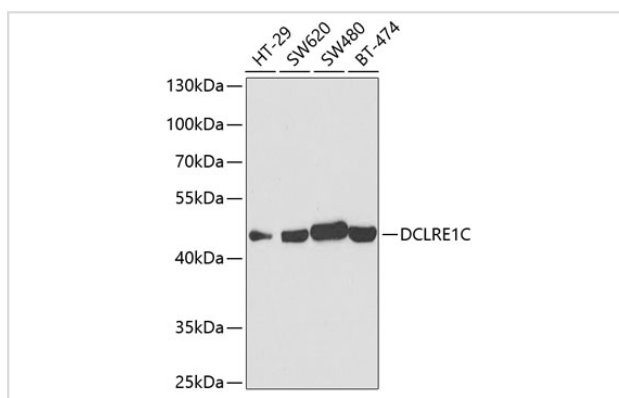
Description

Product Name	DCLRE1C Antibody
Host Species	Rabbit
Clonality	Polyclonal
Isotype	IgG
Purification	Affinity purification
Applications	WB
Species Reactivity	Human,Mouse,Rat
Specificity	The antibody detects endogenous level of total DCLRE1C protein.
Immunogen Type	Recombinant Protein
Immunogen Description	Recombinant fusion protein of human DCLRE1C (NP_001029027.1).
Target Name	DCLRE1C
Other Names	DCLRE1C;A-SCID;DCLREC1C;RS-SCID;SCIDA;SNM1C
Accession No.	Uniprot:Q96SD1GeneID:64421
SDS-PAGE MW	45kDa
Concentration	1.0mg/ml
Formulation	PBS with 0.02% sodium azide,50% glycerol,pH7.3.
Storage	Store at -20°C. Avoid freeze / thaw cycles.

Application Details

WB □ 1:500 - 1:2000

Images



Western blot analysis of extracts of various cell lines, using DCLRE1C antibody.

Background

This gene encodes a nuclear protein that is involved in V(D)J recombination and DNA repair. The encoded protein has single-strand-specific 5'-3' exonuclease activity; it also exhibits endonuclease activity on 5' and 3' overhangs and hairpins. The protein also functions in the regulation of the cell

cycle in response to DNA damage. Mutations in this gene can cause Athabaskan-type severe combined immunodeficiency (SCIDA) and Omenn syndrome. Alternative splicing results in multiple transcript variants.

Note: This product is for in vitro research use only and is not intended for use in humans or animals.