

EZH2 Antibody

Catalog No: #33009

Package Size: #33009-1 50ul #33009-2 100ul

Orders: order@signalwayantibody.comSupport: tech@signalwayantibody.com

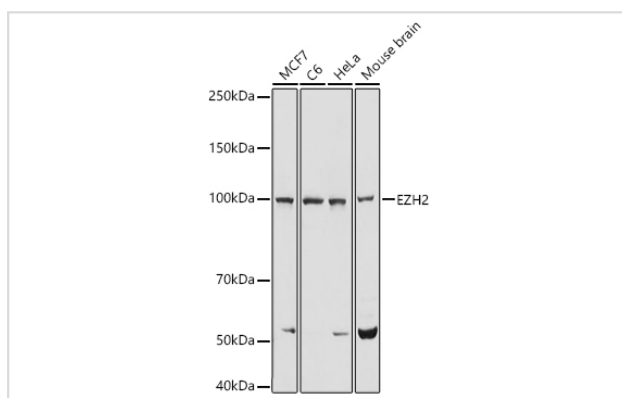
Description

Product Name	EZH2 Antibody
Host Species	Rabbit
Clonality	Polyclonal
Isotype	IgG
Purification	Affinity purification
Applications	WB,IHC
Species Reactivity	Human,Mouse,Rat
Specificity	The antibody detects endogenous level of total EZH2 protein.
Immunogen Type	Recombinant Protein
Immunogen Description	Recombinant fusion protein of human EZH2/KMT6 (NP_001190176.1).
Target Name	EZH2
Other Names	ENX-1;ENX1;EZH1;EZH2b;KMT6;KMT6A;WVS;WVS2;EZH2;KMT6 / EZH2
Accession No.	Uniprot:Q15910GeneID:2146
SDS-PAGE MW	98KDa
Concentration	1.0mg/ml
Formulation	PBS with 0.02% sodium azide,50% glycerol,pH7.3.
Storage	Store at -20°C. Avoid freeze / thaw cycles.

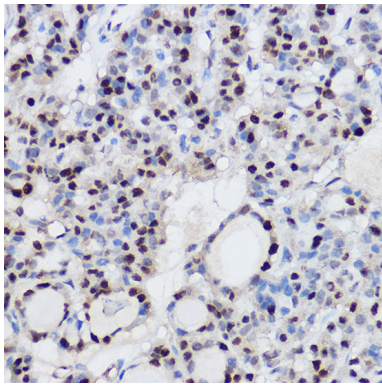
Application Details

WB □ 1:500 - 1:2000 IHC □ 1:50 - 1:200

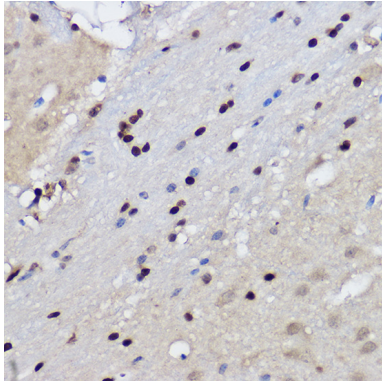
Images



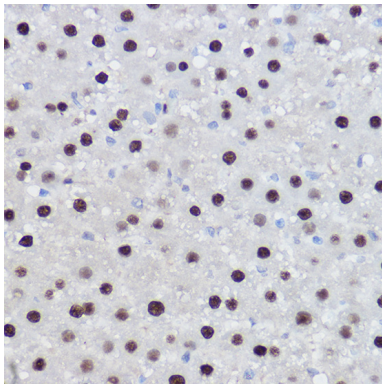
Western blot analysis of extracts of various cell lines, using EZH2 antibody.



Immunohistochemistry of paraffin-embedded human thyroid cancer using EZH2/KMT6 Rabbit pAb.



Immunohistochemistry of paraffin-embedded mouse brain using EZH2/KMT6 Rabbit pAb.



Immunohistochemistry of paraffin-embedded rat liver using EZH2/KMT6 Rabbit pAb.

Background

This gene encodes a member of the Polycomb-group (PcG) family. PcG family members form multimeric protein complexes, which are involved in maintaining the transcriptional repressive state of genes over successive cell generations. This protein associates with the embryonic ectoderm development protein, the VAV1 oncoprotein, and the X-linked nuclear protein. This protein may play a role in the hematopoietic and central nervous systems. Multiple alternatively spliced transcript variants encoding distinct isoforms have been identified for this gene.

Note: This product is for in vitro research use only and is not intended for use in humans or animals.