

CXCL1 Antibody

Catalog No: #33054

Package Size: #33054-1 50ul #33054-2 100ul

Orders: order@signalwayantibody.com

Support: tech@signalwayantibody.com

Description

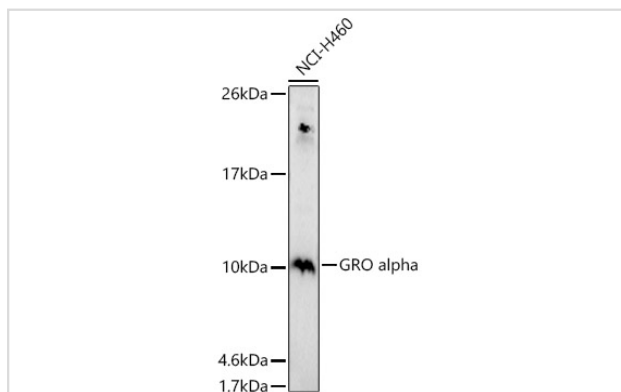
Product Name	CXCL1 Antibody
Host Species	Rabbit
Clonality	Polyclonal
Isotype	IgG
Purification	Affinity purification
Applications	WB,IF
Species Reactivity	Human,Rat
Specificity	The antibody detects endogenous level of total CXCL1 protein.
Immunogen Type	Recombinant Protein
Immunogen Description	Recombinant fusion protein of human GRO alpha (NP_001502.1).
Target Name	CXCL1
Other Names	CXCL1;FSP;GRO1;GROa;MGSA;MGSA-a;NAP-3;SCYB1;GRO alpha
Accession No.	Uniprot:P09341GeneID:2919
SDS-PAGE MW	11KDa
Concentration	1.0mg/ml
Formulation	PBS with 0.02% sodium azide,50% glycerol,pH7.3.
Storage	Store at -20°C. Avoid freeze / thaw cycles.

Application Details

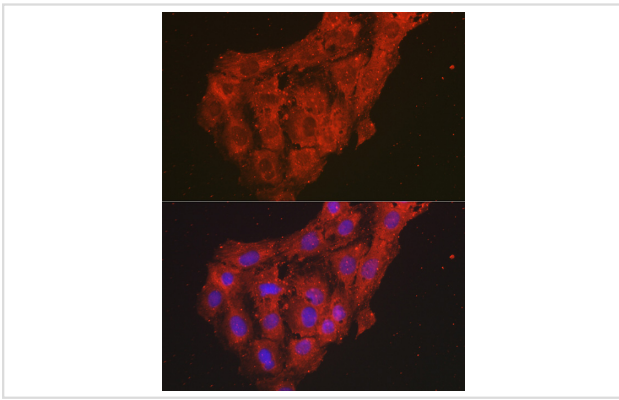
WB □ 1:500 - 1:2000

IF □ 1:50 - 1:200

Images



Western blot analysis of extracts of NCI-H460 cells, using GRO alpha antibody.



Immunofluorescence analysis of C6 cells using GRO alpha Rabbit pAb.

Background

This antimicrobial gene encodes a member of the CXC subfamily of chemokines. The encoded protein is a secreted growth factor that signals through the G-protein coupled receptor, CXC receptor 2. This protein plays a role in inflammation and as a chemoattractant for neutrophils. Aberrant expression of this protein is associated with the growth and progression of certain tumors. A naturally occurring processed form of this protein has increased chemotactic activity. Alternate splicing results in coding and non-coding variants of this gene. A pseudogene of this gene is found on chromosome 4.

Published Papers

el at., Diagnosis and prognostic value of C-X-C motif chemokine ligand 1 in colon adenocarcinoma based on The Cancer Genome Atlas and Guangxi cohort. In *J Cancer* on 2021 by Yi-Zhen Gong, Hui Ma, et al.. PMID:34405013, , (2021)

[PMID:34405013](#)

Note: This product is for in vitro research use only and is not intended for use in humans or animals.