

Coiled-coil domain-containing protein 106 Antibody

Catalog No: #21412



Package Size: #21412-1 50ul #21412-2 100ul

Orders: order@signalwayantibody.comSupport: tech@signalwayantibody.com

Description

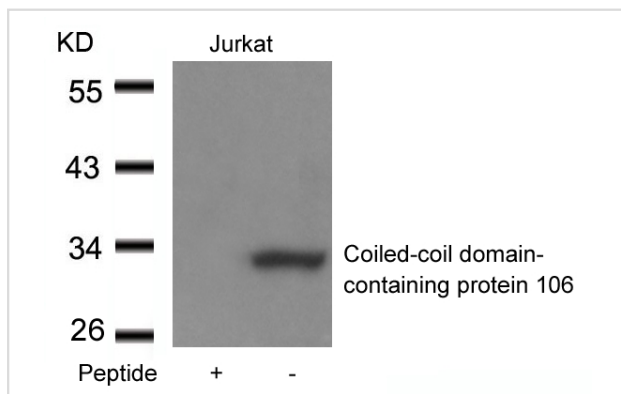
Product Name	Coiled-coil domain-containing protein 106 Antibody
Host Species	Rabbit
Clonality	Polyclonal
Purification	Antibodies were produced by immunizing rabbits with synthetic peptide and KLH conjugates. Antibodies were purified by affinity-chromatography using epitope-specific peptide.
Applications	WB
Species Reactivity	Hu
Specificity	The antibody detects endogenous level of total Coiled-coil domain-containing protein. 106.
Immunogen Type	Peptide-KLH
Immunogen Description	Peptide sequence around aa.2~6 (N-D-R-S-S) derived from Human Coiled-coil domain-containing protein 106.
Target Name	Coiled-coil domain-containing protein 106
Other Names	CCDC106; ZNF581; HSU79303
Accession No.	Swiss-Prot: Q9BWC9NCBI Protein: NP_037433.2
Concentration	1.0mg/ml
Formulation	Supplied at 1.0mg/mL in phosphate buffered saline (without Mg ²⁺ and Ca ²⁺), pH 7.4, 150mM NaCl, 0.02% sodium azide and 50% glycerol.
Storage	Store at -20°C for long term preservation (recommended). Store at 4°C for short term use.

Application Details

Predicted MW: 32kd

Western blotting: 1:500~1:1000

Images



Western blot analysis of extracts from Jurkat cells using Coiled-coil domain-containing protein 106 antibody #21412 and the same antibody preincubated with blocking peptide.

Background

CCDC106 promotes the degradation of p53 protein and inhibits its transactivity.

Published Papers

et al., Identification and characterization of the novel protein CCDC106 that interacts with p53 and promotes its degradation. In FEBS Lett on 2010 Mar 19 by Jianlin Zhou, Xi Qiao, et al..PMID: 20159018

, , (2010)

[PMID:20159018](#)

Note: This product is for in vitro research use only and is not intended for use in humans or animals.