

## EZH1 Antibody

Catalog No: #33064

Package Size: #33064-1 50ul #33064-2 100ul

Orders: order@signalwayantibody.com

Support: tech@signalwayantibody.com

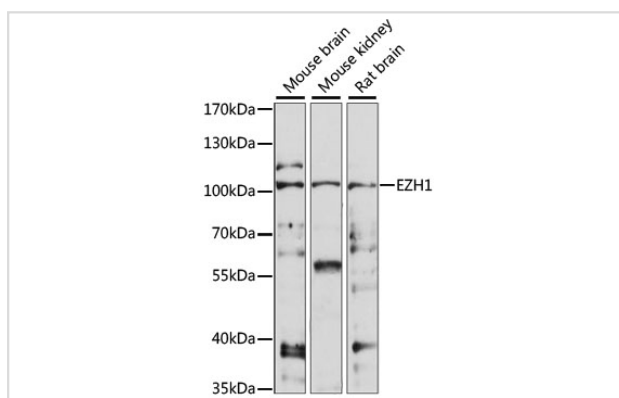
## Description

Product Name	EZH1 Antibody
Host Species	Rabbit
Clonality	Polyclonal
Purification	Antibodies were purified by affinity purification using immunogen.
Applications	WB,IF
Species Reactivity	Human,Mouse,Rat
Specificity	The antibody detects endogenous level of total EZH1 protein.
Immunogen Type	Recombinant Protein
Immunogen Description	Recombinant protein of human EZH1.
Target Name	EZH1
Other Names	KMT6B;
Accession No.	Swiss-Prot:Q92800NCBI Gene ID:2145
SDS-PAGE MW	85KD
Concentration	1.0mg/ml
Formulation	Supplied at 1.0mg/mL in phosphate buffered saline (without Mg <sup>2+</sup> and Ca <sup>2+</sup> ), pH 7.4, 150mM NaCl, 0.02% sodium azide and 50% glycerol.
Storage	Store at -20°C

## Application Details

WB □ 1:200 - 1:2000IF □ 1:50 - 1:200

## Images



Western blot analysis of extracts of various cell lines, using EZH1 antibody at 1:1000 dilution.

## Background

EZH1 is a component of a noncanonical Polycomb repressive complex-2 (PRC2) that mediates methylation of histone H3 (see MIM 602812) lys27 (H3K27) and functions in the maintenance of embryonic stem cell pluripotency and plasticity (Shen et al., 2008)

---

Note: This product is for in vitro research use only and is not intended for use in humans or animals.