

Zinc finger CCHC domain-containing protein 10 Antibody

Catalog No: #21413

Orders: order@signalwayantibody.comSupport: tech@signalwayantibody.com

Package Size: #21413-1 50ul #21413-2 100ul

Description

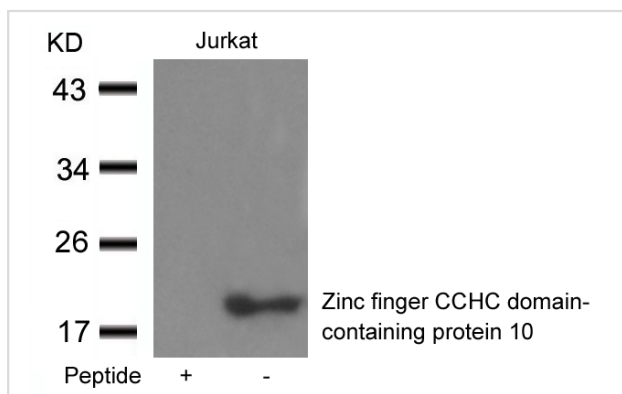
Product Name	Zinc finger CCHC domain-containing protein 10 Antibody
Host Species	Rabbit
Clonality	Polyclonal
Purification	Antibodies were produced by immunizing rabbits with synthetic peptide and KLH conjugates. Antibodies were purified by affinity-chromatography using epitope-specific peptide.
Applications	WB IHC IF
Species Reactivity	Hu
Specificity	The antibody detects endogenous level of total Zinc finger CCHC domain-containing protein. 10.
Immunogen Type	Peptide-KLH
Immunogen Description	Peptide sequence around aa.10~14 (A-R-R-Q-A) derived from Human Zinc finger CCHC domain-containing protein 10.
Target Name	Zinc finger CCHC domain-containing protein 10
Other Names	ZCCHC10; FLJ20094;
Accession No.	Swiss-Prot: Q5EB97NCBI Protein:
Concentration	1.0mg/ml
Formulation	Supplied at 1.0mg/mL in phosphate buffered saline (without Mg ²⁺ and Ca ²⁺), pH 7.4, 150mM NaCl, 0.02% sodium azide and 50% glycerol.
Storage	Store at -20°C for long term preservation (recommended). Store at 4°C for short term use.

Application Details

Predicted MW: 20kd

Western blotting: 1:500~1:1000

Images



Western blot analysis of extracts from Jurkat cells using Zinc finger CCHC domain-containing protein 10 antibody #21413 and the same antibody preincubated with blocking peptide.

Background

A member of the family of Zcchc (zinc-finger, CCHC domain-containing protein) proteins. Zcchc contains RNA-interacting motifs, and has been implicated in signalling pathways involved in cytokine expression.

Hagan JP, et al. (2009) *Nat Struct Mol Biol.* 16(10):1021-5.

Titulaer MK, et al. (2008) *BMC Bioinformatics.* 9:133.

Li H, et al. (2009) *Acta Biochim Biophys Sin (Shanghai).* 41(7):535-44.

Note: This product is for in vitro research use only and is not intended for use in humans or animals.