

MBL2 Antibody

Catalog No: #33070

Package Size: #33070-1 50ul #33070-2 100ul

Orders: order@signalwayantibody.comSupport: tech@signalwayantibody.com

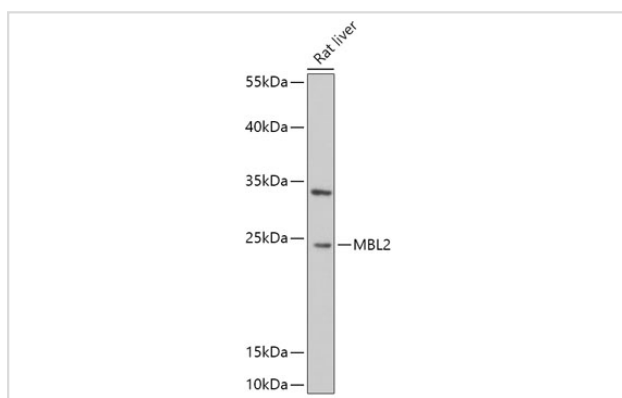
Description

Product Name	MBL2 Antibody
Host Species	Rabbit
Clonality	Polyclonal
Isotype	IgG
Purification	Affinity purification
Applications	WB
Species Reactivity	Human,Mouse,Rat
Specificity	The antibody detects endogenous level of total MBL2 protein.
Immunogen Type	Recombinant Protein
Immunogen Description	Recombinant fusion protein of human MBL2 (NP_000233.1).
Target Name	MBL2
Other Names	MBL2;COLEC1;HSMBPC;MBL;MBL2D;MBP;MBP-C;MBP1;MBPD
Accession No.	Uniprot:P11226GeneID:4153
SDS-PAGE MW	24kDa
Concentration	1.0mg/ml
Formulation	PBS with 0.02% sodium azide,50% glycerol,pH7.3.
Storage	Store at -20°C. Avoid freeze / thaw cycles.

Application Details

WB □ 1:500 - 1:2000

Images



Western blot analysis of extracts of Rat liver, using MBL2 antibody.

Background

This gene encodes the soluble mannose-binding lectin or mannose-binding protein found in serum. The protein encoded belongs to the collectin family and is an important element in the innate immune system. The protein recognizes mannose and N-acetylglucosamine on many microorganisms, and

is capable of activating the classical complement pathway. Deficiencies of this gene have been associated with susceptibility to autoimmune and infectious diseases.

Note: This product is for in vitro research use only and is not intended for use in humans or animals.