

## SETDB1 Antibody

Catalog No: #33107



Package Size: #33107-1 50ul #33107-2 100ul

Orders: [order@signalwayantibody.com](mailto:order@signalwayantibody.com)Support: [tech@signalwayantibody.com](mailto:tech@signalwayantibody.com)

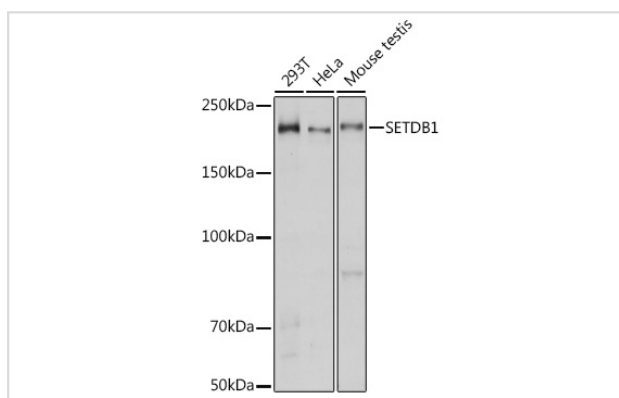
## Description

Product Name	SETDB1 Antibody
Host Species	Rabbit
Clonality	Polyclonal
Isotype	IgG
Purification	Affinity purification
Applications	WB,IF
Species Reactivity	Human,Mouse,Rat
Specificity	The antibody detects endogenous level of total SETDB1 protein.
Immunogen Type	Recombinant Protein
Immunogen Description	Recombinant fusion protein of human SETDB1 (NP_001230420.1).
Target Name	SETDB1
Other Names	SETDB1;ESET;H3-K9-HMTase4;KG1T;KMT1E;TDRD21
Accession No.	Uniprot:Q15047GeneID:9869
SDS-PAGE MW	180KDa
Concentration	1.0mg/ml
Formulation	PBS with 0.02% sodium azide,50% glycerol,pH7.3.
Storage	Store at -20°C. Avoid freeze / thaw cycles.

## Application Details

WB □ 1:500 - 1:2000 IF □ 1:50 - 1:100

## Images



Western blot analysis of extracts of various cell lines, using SETDB1 antibody.

## Background

This gene encodes a histone methyltransferase which regulates histone methylation, gene silencing, and transcriptional repression. This gene has been identified as a target for treatment in Huntington Disease, given that gene silencing and transcription dysfunction likely play a role in the disease

pathogenesis. Alternatively spliced transcript variants of this gene have been described.

## Published Papers

---

el at., Autoantibody against Tumor-Associated Antigens as Diagnostic Biomarkers in Hispanic Patients with Hepatocellular Carcinoma. In Cells on 2022 Oct 14 by Yangcheng Ma, Cuipeg Qiu, et al..PMID:36291095, , (2022)

[PMID:36291095](#)

---

Note: This product is for in vitro research use only and is not intended for use in humans or animals.