

Cytochrome c Antibody

Catalog No: #33354



Package Size: #33354-1 50ul #33354-2 100ul

Orders: order@signalwayantibody.comSupport: tech@signalwayantibody.com

Description

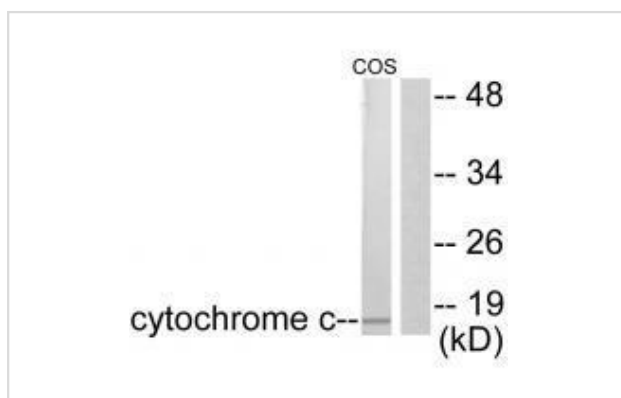
Product Name	Cytochrome c Antibody
Host Species	Rabbit
Clonality	Polyclonal
Purification	The antibody was affinity-purified from rabbit antiserum by affinity-chromatography using epitope-specific immunogen.
Applications	WB IHC
Species Reactivity	Hu Ms Rt
Specificity	The antibody detects endogenous levels of total Cytochrome c protein.
Immunogen Type	Peptide
Immunogen Description	Synthesized peptide derived from human Cytochrome c.
Target Name	Cytochrome c
Other Names	CYCS; CYC;
Accession No.	Swiss-Prot: P99999NCBI Gene ID: 54205
SDS-PAGE MW	15kd
Concentration	1.0mg/ml
Formulation	Rabbit IgG in phosphate buffered saline (without Mg ²⁺ and Ca ²⁺), pH 7.4, 150mM NaCl, 0.02% sodium azide and 50% glycerol.
Storage	Store at -20°C

Application Details

Western blotting: 1:500~1:3000

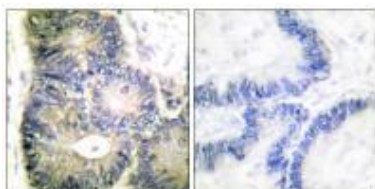
Immunohistochemistry: 1:50~1:100

Images



Western blot analysis of extracts from COS7 cells, using Cytochrome c antibody #33354.

Immunohistochemical analysis of paraffin-embedded human colon carcinoma tissue, using Cytochrome c antibody #33354.



Background

Electron carrier protein. The oxidized form of the cytochrome c heme group can accept an electron from the heme group of the cytochrome c1 subunit of cytochrome reductase. Cytochrome c then transfers this electron to the cytochrome oxidase complex, the final protein carrier in the mitochondrial electron-transport chain. Plays a role in apoptosis. Suppression of the anti-apoptotic members or activation of the pro-apoptotic members of the Bcl-2 family leads to altered mitochondrial membrane permeability resulting in release of cytochrome c into the cytosol. Binding of cytochrome c to Apaf-1 triggers the activation of caspase-9, which then accelerates apoptosis by activating other caspases.

R. Pullerits, *Rheumatology*, Jan 2005; 44: 32 - 39.

Bogdan Polevoda, *J. Biol. Chem.*, Jun 2000; 275: 20508

Larry A. Allen, *J. Biol. Chem.*, Jan 1995; 270: 110.

Akemi MATSUSHIMA, *J. Biochem. (Tokyo)*, Jan 1986; 100: 543 - 551.

Published Papers

el at., Grape seed proanthocyanidin extract ameliorates cisplatin-induced testicular apoptosis via PI3K/Akt/mTOR and endoplasmic reticulum stress pathways in rats. In *J Food Biochem* on 2021 Jun 21 by Xuhong Chang, Minmin Tian, et al.. PMID:34152018, , (2021)

[PMID:34152018](#)

el at., Activation of Fas death receptor pathway and Bid in hepatocytes is involved in saikosaponin D induction of hepatotoxicity. In *Environ Toxicol Pharmacol* on 2016 Jan by Feng Zhang, Li Chen et al.. PMID:26645133, , (2016)

[PMID:26645133](#)

Note: This product is for in vitro research use only and is not intended for use in humans or animals.