

## JM4 Antibody

Catalog No: #33412

Package Size: #33412-1 50ul #33412-2 100ul

Orders: [order@signalwayantibody.com](mailto:order@signalwayantibody.com)Support: [tech@signalwayantibody.com](mailto:tech@signalwayantibody.com)

## Description

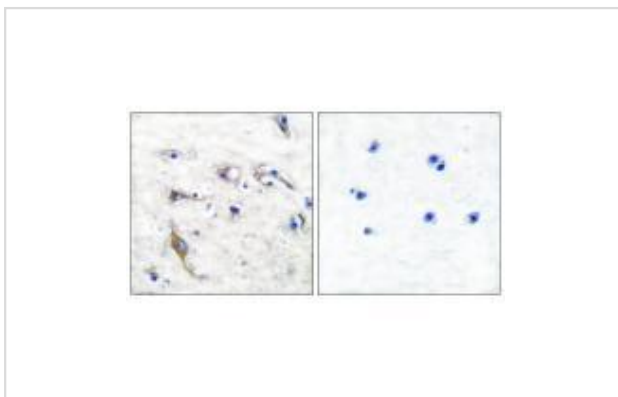
Product Name	JM4 Antibody
Host Species	Rabbit
Clonality	Polyclonal
Purification	The antibody was affinity-purified from rabbit antiserum by affinity-chromatography using epitope-specific immunogen.
Applications	WB IHC
Species Reactivity	Hu Ms Rt
Specificity	The antibody detects endogenous levels of total JM4 protein.
Immunogen Type	Peptide
Immunogen Description	Synthesized peptide derived from human JM4.
Target Name	JM4
Other Names	PRA1 family protein 2; PRAF2;
Accession No.	Swiss-Prot: O60831NCBI Gene ID: 11230
SDS-PAGE MW	20kd
Concentration	1.0mg/ml
Formulation	Rabbit IgG in phosphate buffered saline (without Mg <sup>2+</sup> and Ca <sup>2+</sup> ), pH 7.4, 150mM NaCl, 0.02% sodium azide and 50% glycerol.
Storage	Store at -20°C

## Application Details

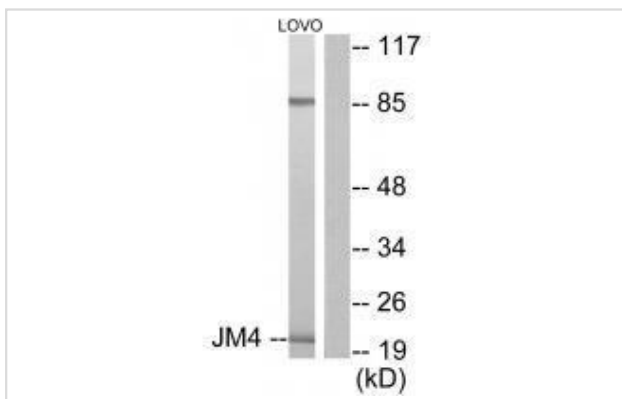
Western blotting: 1:500~1:3000

Immunohistochemistry: 1:50~1:100

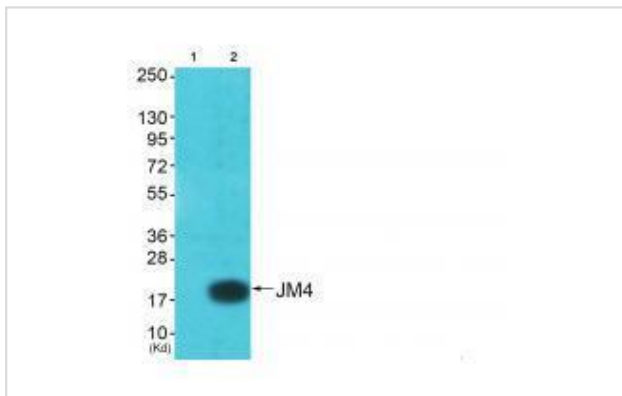
## Images



Immunohistochemical analysis of paraffin-embedded human brain tissue using JM4 antibody #33412.



Western blot analysis of extracts from LOVO cells, using JM4 antibody #33412.



Western blot analysis of extracts from A549 cells (Lane 2), using JM4 antibody #33412. The lane on the left is treated with synthesized peptide.

## Background

May be involved in ER/Golgi transport and vesicular traffic. Plays a proapoptotic role in cerulenin-induced neuroblastoma apoptosis.

Koichi Kusuvara, *J. Virol.*, Oct 1999; 73: 8112 - 8119.

Isis Rivera-Walsh, *J. Biol. Chem.*, Aug 2000; 275: 25222.

Eric D. Tang, *J. Biol. Chem.*, Sep 2003; 278: 37297 - 37305.

Isis Rivera-Walsh, *J. Biol. Chem.*, Oct 2001; 276: 40385 - 40388.

Note: This product is for in vitro research use only and is not intended for use in humans or animals.