

## XRCC1 Antibody

Catalog No: #33546

Package Size: #33546-1 50ul #33546-2 100ul

Orders: [order@signalwayantibody.com](mailto:order@signalwayantibody.com)Support: [tech@signalwayantibody.com](mailto:tech@signalwayantibody.com)

## Description

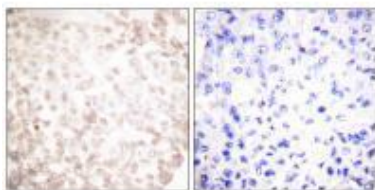
Product Name	XRCC1 Antibody
Host Species	Rabbit
Clonality	Polyclonal
Purification	The antibody was affinity-purified from rabbit antiserum by affinity-chromatography using epitope-specific immunogen.
Applications	WB IHC
Species Reactivity	Hu Ms Rt
Specificity	The antibody detects endogenous levels of total XRCC1 protein.
Immunogen Type	Peptide
Immunogen Description	Synthesized peptide derived from Internal of human XRCC1.
Target Name	XRCC1
Other Names	DNA-repair protein XRCC1; XRC1;
Accession No.	Swiss-Prot: P18887NCBI Gene ID: 7515
SDS-PAGE MW	90kd
Concentration	1.0mg/ml
Formulation	Rabbit IgG in phosphate buffered saline (without Mg <sup>2+</sup> and Ca <sup>2+</sup> ), pH 7.4, 150mM NaCl, 0.02% sodium azide and 50% glycerol.
Storage	Store at -20°C

## Application Details

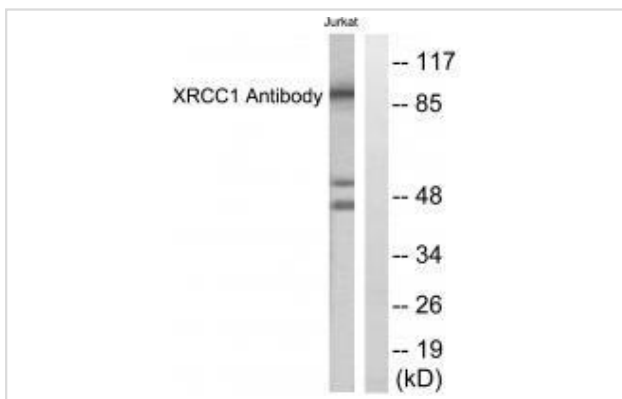
Western blotting: 1:500~1:3000

Immunohistochemistry: 1:50~1:100

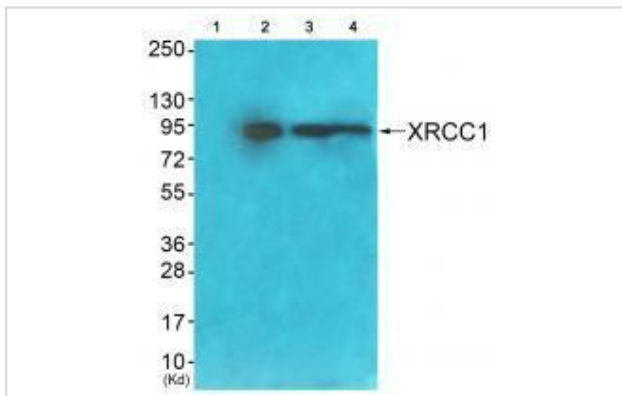
## Images



Immunohistochemistry analysis of paraffin-embedded human lung carcinoma tissue using XRCC1 antibody #33546.



Western blot analysis of extracts from Jurkat cells, using XRCC1 antibody #33546.



Western blot analysis of extracts from JK cells (Lane 2), HuvEc cells (Lane 3) and COS7 cells (Lane 4), using XRCC1 antibody #33546. The lane on the left is treated with synthesized peptide.

## Background

Corrects defective DNA strand-break repair and sister chromatid exchange following treatment with ionizing radiation and alkylating agents.

Ming-Whei Yu, *J Natl Cancer Inst*, Oct 2003; 95: 1485 - 1488.

Nicolas LB Blyvy, *Nucleic Acids Res.*, Jan 2006; 34: 32 - 41.

Claire Seedhouse, *Blood*, Nov 2002; 100: 3761 - 3766.

Eric J. Duell, *Cancer Res.*, Aug 2002; 62: 4630 - 4636.

Note: This product is for in vitro research use only and is not intended for use in humans or animals.