

ZEB2 Antibody

Catalog No: #33595

Package Size: #33595-1 50ul #33595-2 100ul

Orders: order@signalwayantibody.comSupport: tech@signalwayantibody.com

Description

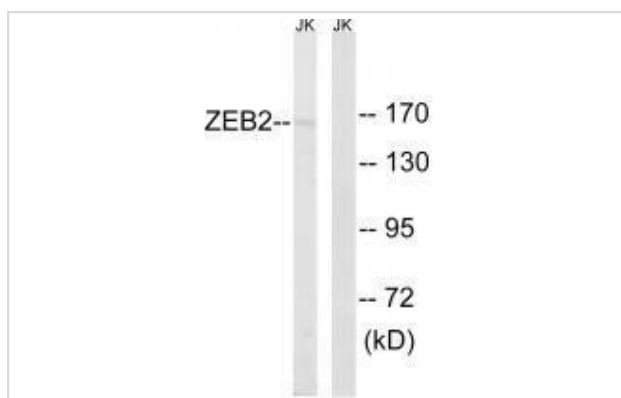
Product Name	ZEB2 Antibody
Host Species	Rabbit
Clonality	Polyclonal
Purification	The antibody was affinity-purified from rabbit antiserum by affinity-chromatography using epitope-specific immunogen.
Applications	WB IHC
Species Reactivity	Hu Ms
Specificity	The antibody detects endogenous levels of total ZEB2 protein.
Immunogen Type	Peptide
Immunogen Description	Synthesized peptide derived from internal of human ZEB2.
Target Name	ZEB2
Other Names	SIP-1; SIP1; Smad interacting-protein 1; Smad-interacting 1; SMADIP1
Accession No.	Swiss-Prot: O60315NCBI Gene ID: 9839
SDS-PAGE MW	136kd
Concentration	1.0mg/ml
Formulation	Rabbit IgG in phosphate buffered saline (without Mg ²⁺ and Ca ²⁺), pH 7.4, 150mM NaCl, 0.02% sodium azide and 50% glycerol.
Storage	Store at -20°C

Application Details

Western blotting: 1:500~1:3000

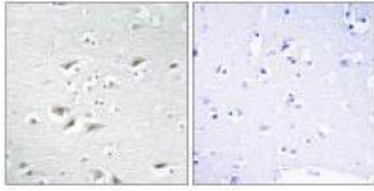
Immunohistochemistry: 1:50~1:100

Images



Western blot analysis of extracts from HepG2 cells, using ZEB2 antibody #33595.

Immunohistochemistry analysis of paraffin-embedded human brain tissue using ZEB2 antibody #33595.



Background

Transcriptional inhibitor that binds to DNA sequence 5'-CACCT-3' in different promoters. Represses transcription of E-cadherin.

Cacheux V., Hum. Mol. Genet. 10:1503-1510(2001).

Wakamatsu N., Nat. Genet. 27:369-370(2001).

Nagase T., DNA Res. 5:31-39(1998).

Note: This product is for in vitro research use only and is not intended for use in humans or animals.