

JHD3B Antibody

Catalog No: #33623

Package Size: #33623-1 50ul #33623-2 100ul

Orders: order@signalwayantibody.comSupport: tech@signalwayantibody.com

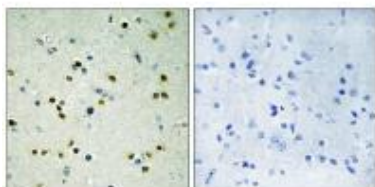
Description

Product Name	JHD3B Antibody
Host Species	Rabbit
Clonality	Polyclonal
Purification	The antibody was affinity-purified from rabbit antiserum by affinity-chromatography using epitope-specific immunogen.
Applications	IHC
Species Reactivity	Hu
Specificity	The antibody detects endogenous levels of total JHD3B protein.
Immunogen Type	Peptide
Immunogen Description	Synthesized peptide derived from C-terminal of human JHD3B.
Target Name	JHD3B
Other Names	EC 1.14.11.-; JMJ2B; Jumonji domain containing protein 2B;
Accession No.	Swiss-Prot: O94953NCBI Gene ID: 23030
SDS-PAGE MW	122kd
Concentration	1.0mg/ml
Formulation	Rabbit IgG in phosphate buffered saline (without Mg ²⁺ and Ca ²⁺), pH 7.4, 150mM NaCl, 0.02% sodium azide and 50% glycerol.
Storage	Store at -20°C

Application Details

Immunohistochemistry: 1:50~1:100

Images



Immunohistochemistry analysis of paraffin-embedded human brain tissue, using JHD3B antibody #33623.

Background

Histone demethylase that specifically demethylates 'Lys-9' of histone H3, thereby playing a role in histone code. Does not demethylate histone H3

'Lys-4', H3 'Lys-27', H3 'Lys-36' nor H4 'Lys-20'. Only able to demethylate trimethylated H3 'Lys-9', with a weaker activity than KDM4A, KDM4C and KDM4D. Demethylation of Lys residue generates formaldehyde and succinate.

Nagase T., DNA Res. 5:355-364(1998).

Nakajima D., DNA Res. 9:99-106(2002).

Grimwood J., Nature 428:529-535(2004).

Note: This product is for in vitro research use only and is not intended for use in humans or animals.