

ABL1/2 (Ab-393/439) Antibody

Catalog No: #21530

Package Size: #21530-1 50ul #21530-2 100ul

Orders: order@signalwayantibody.comSupport: tech@signalwayantibody.com

Description

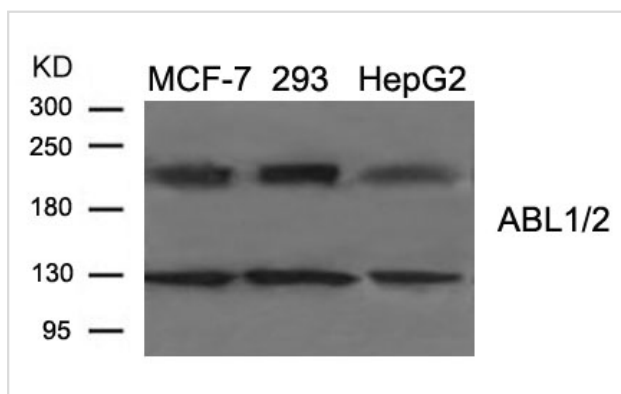
Product Name	ABL1/2 (Ab-393/439) Antibody
Host Species	Rabbit
Clonality	Polyclonal
Purification	Antibodies were produced by immunizing rabbits with synthetic peptide and KLH conjugates. Antibodies were purified by affinity-chromatography using epitope-specific peptide.
Applications	WB
Species Reactivity	Hu Ms
Specificity	The antibody detects endogenous levels of total ABL1/2 protein.
Immunogen Type	Peptide-KLH
Immunogen Description	Peptide sequence around aa.391~395/437~441(D-T-Y-T-A) derived from Human ABL1/2.
Target Name	ABL1/2
Other Names	ABL; v-abl; c-ABL; p150; JTK7
Accession No.	Swiss-Prot: P00519 P42684NCBI Protein: NP_005148.2 NP_001129472.1
Concentration	1.0mg/ml
Formulation	Supplied at 1.0mg/mL in phosphate buffered saline (without Mg ²⁺ and Ca ²⁺), pH 7.4, 150mM NaCl, 0.02% sodium azide and 50% glycerol.
Storage	Store at -20°C for long term preservation (recommended). Store at 4°C for short term use.

Application Details

Predicted MW: 135 210kd

Western blotting: 1:500~1:1000

Images



Western blot analysis of extract from MCF-7, 293, HepG2 cells using ABL1/2 (Ab-393/439) Antibody #21530.

Background

Regulates cytoskeleton remodeling during cell differentiation, cell division and cell adhesion. Localizes to dynamic actin structures, and phosphorylates

CRK and CRKL, DOK1, and other proteins controlling cytoskeleton dynamics. Regulates DNA repair potentially by activating the proapoptotic pathway when the DNA damage is too severe to be repaired. Phosphorylates PSMA7 that leads to an inhibition of proteasomal activity and cell cycle transition blocks.

Wang, J.Y. et al. (2000) *Oncogene* 19, 5643-5650.

Danial, N.N. et al. (2000) *Oncogene* 19, 2523-2531.

Brasher, B.B. et al. (2000) *J. Biol. Chem.* 275, 35631-35637.

Pluk, H. et al. (2002) *Cell* 108, 247-259.

Note: This product is for in vitro research use only and is not intended for use in humans or animals.