

ZNF265 Antibody

Catalog No: #33627

Package Size: #33627-1 50ul #33627-2 100ul

Orders: order@signalwayantibody.comSupport: tech@signalwayantibody.com

Description

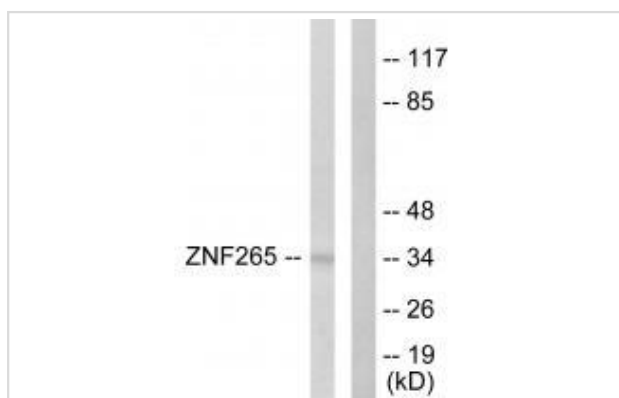
Product Name	ZNF265 Antibody
Host Species	Rabbit
Clonality	Polyclonal
Purification	The antibody was affinity-purified from rabbit antiserum by affinity-chromatography using epitope-specific immunogen.
Applications	WB IF
Species Reactivity	Hu
Specificity	The antibody detects endogenous levels of total ZNF265 protein.
Immunogen Type	Peptide
Immunogen Description	Synthesized peptide derived from internal of human ZNF265.
Target Name	ZNF265
Other Names	Z265; ZIS; ZN265; Zinc finger protein 265; Zinc finger
Accession No.	Swiss-Prot: O95218NCBI Gene ID: 9406
SDS-PAGE MW	34kd
Concentration	1.0mg/ml
Formulation	Rabbit IgG in phosphate buffered saline (without Mg ²⁺ and Ca ²⁺), pH 7.4, 150mM NaCl, 0.02% sodium azide and 50% glycerol.
Storage	Store at -20°C

Application Details

Western blotting: 1:500~1:3000

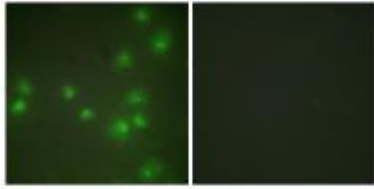
Immunofluorescence: 1:100~1:500

Images



Western blot analysis of extracts from HeLa cells, using ZNF265 antibody #33627.

Immunofluorescence analysis of HUVEC cells, using ZNF265 antibody #33627.



Background

Splice factor required for alternative splicing of TRA2B/SFRS10 transcripts. May interfere with constitutive 5'-splice site selection.

Nakano M., Gene 225:59-65(1998).

Wiemann S., Genome Res. 11:422-435(2001).

Gregory S.G., Nature 441:315-321(2006).

Note: This product is for in vitro research use only and is not intended for use in humans or animals.