

# JAK1 Antibody

Catalog No: #33721



Package Size: #33721-1 50ul #33721-2 100ul

Orders: [order@signalwayantibody.com](mailto:order@signalwayantibody.com)Support: [tech@signalwayantibody.com](mailto:tech@signalwayantibody.com)

## Description

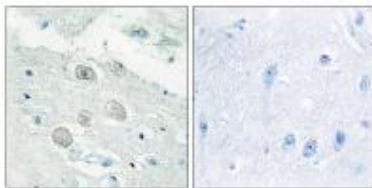
Product Name	JAK1 Antibody
Host Species	Rabbit
Clonality	Polyclonal
Purification	The antibody was affinity-purified from rabbit antiserum by affinity-chromatography using epitope-specific immunogen.
Applications	IHC IF
Species Reactivity	Hu Ms
Specificity	The antibody detects endogenous levels of total JAK1 protein.
Immunogen Type	Peptide
Immunogen Description	Synthesized peptide derived from internal of human JAK1.
Target Name	JAK1
Other Names	EC 2.7.10.2; JAK-1; JAK1; JAK1A; Janus kinase 1
Accession No.	Swiss-Prot: P23458NCBI Gene ID: 3716
SDS-PAGE MW	130kd
Concentration	1.0mg/ml
Formulation	Rabbit IgG in phosphate buffered saline (without Mg <sup>2+</sup> and Ca <sup>2+</sup> ), pH 7.4, 150mM NaCl, 0.02% sodium azide and 50% glycerol.
Storage	Store at -20°C

## Application Details

Immunohistochemistry: 1:50~1:100

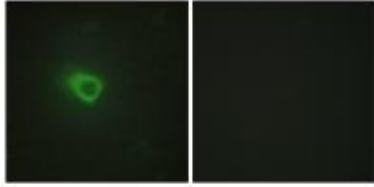
Immunofluorescence: 1:100~1:500

## Images



Immunohistochemistry analysis of paraffin-embedded human brain tissue, using JAK1 antibody #33721.

Immunofluorescence analysis of HeLa cells, using JAK1 antibody #33721.



## Background

Tyrosine kinase of the non-receptor type, involved in the IFN-alpha/beta/gamma signal pathway. Kinase partner for the interleukin (IL)-2 receptor.

Wilks A.F., Mol. Cell. Biol. 11:2057-2065(1991).

Lee S.-T., Oncogene 8:3403-3410(1993).

Lindholm C.K., Biochem. Biophys. Res. Commun. 296:929-936(2002).

Note: This product is for in vitro research use only and is not intended for use in humans or animals.