

ZNF147 Antibody

Catalog No: #33878

Package Size: #33878-1 50ul #33878-2 100ul

Orders: order@signalwayantibody.comSupport: tech@signalwayantibody.com

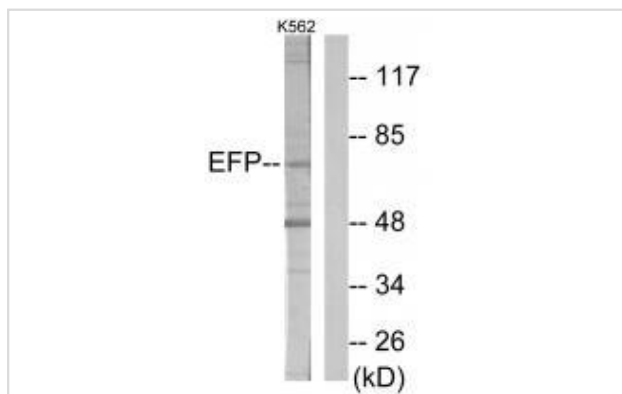
Description

Product Name	ZNF147 Antibody
Host Species	Rabbit
Clonality	Polyclonal
Purification	The antibody was affinity-purified from rabbit antiserum by affinity-chromatography using epitope-specific immunogen.
Applications	WB
Species Reactivity	Hu
Specificity	The antibody detects endogenous levels of total ZNF147 protein.
Immunogen Type	Peptide
Immunogen Description	Synthesized peptide derived from internal of human ZNF147.
Target Name	ZNF147
Other Names	EFP; Efp; Estrogen responsive finger protein; TRI25; TRIM25
Accession No.	Swiss-Prot: Q14258NCBI Gene ID: 7706
SDS-PAGE MW	71kd
Concentration	1.0mg/ml
Formulation	Rabbit IgG in phosphate buffered saline (without Mg ²⁺ and Ca ²⁺), pH 7.4, 150mM NaCl, 0.02% sodium azide and 50% glycerol.
Storage	Store at -20°C

Application Details

Western blotting: 1:500~1:3000

Images



Western blot analysis of extracts from K562 cells, using ZNF147 antibody #33878.

Background

Functions as a ubiquitin E3 ligase and as an ISG15 E3 ligase. Involved in innate immune defense against viruses by mediating ubiquitination of

DDX58. Mediates 'Lys-63'-linked polyubiquitination of the DDX58 N-terminal CARD-like region which is crucial for triggering the cytosolic signal transduction that leads to the production of interferons in response to viral infection. Promotes ISGylation of 14-3-3 sigma (SFN), an adapter protein implicated in the regulation of a large spectrum signaling pathway. Mediates estrogen action in various target organs.

Inoue S., Proc. Natl. Acad. Sci. U.S.A. 90:11117-11121(1993).

The MGC Project Team, Genome Res. 14:2121-2127(2004).

Rush J., Nat. Biotechnol. 23:94-101(2005).

Note: This product is for in vitro research use only and is not intended for use in humans or animals.